



# CYB561D2 Monoclonal Antibody

<b>Catalog No</b>	BYmab-00364
<b>Isotype</b>	IgG
<b>Reactivity</b>	Human;Rat;Mouse;
<b>Applications</b>	WB
<b>Gene Name</b>	CYB561D2
<b>Protein Name</b>	Cytochrome b561 domain-containing protein 2
<b>Immunogen</b>	The antiserum was produced against synthesized peptide derived from human C56D2. AA range:55-104
<b>Specificity</b>	CYB561D2 Monoclonal Antibody detects endogenous levels of CYB561D2 protein.
<b>Formulation</b>	Liquid in PBS containing 50% glycerol, 0.5% BSA and 0.02% sodium azide.
<b>Source</b>	Monoclonal, Mouse,IgG
<b>Purification</b>	The antibody was affinity-purified from mouse antiserum by affinity-chromatography using epitope-specific immunogen.
<b>Dilution</b>	WB 1:500-2000
<b>Concentration</b>	1 mg/ml
<b>Purity</b>	≥90%
<b>Storage Stability</b>	-20°C/1 year
<b>Synonyms</b>	CYB561D2; 101F6; LUCA12.2; Cytochrome b561 domain-containing protein 2; Putative tumor suppressor protein 101F6
<b>Observed Band</b>	24kD
<b>Cell Pathway</b>	Endoplasmic reticulum membrane ; Multi-pass membrane protein . Cytoplasmic vesicle membrane ; Multi-pass membrane protein .
<b>Tissue Specificity</b>	Pancreas,
<b>Function</b>	cofactor:Binds 2 heme groups non-covalently.,similarity:Contains 1 cytochrome b561 domain.,
<b>Background</b>	cofactor:Binds 2 heme groups non-covalently.,similarity:Contains 1 cytochrome b561 domain.,
<b>matters needing attention</b>	Avoid repeated freezing and thawing!

**Nanjing BYabscience technology Co.,Ltd**

网址: [www.njbybio.com](http://www.njbybio.com)

官方热线: 025-5229-8998

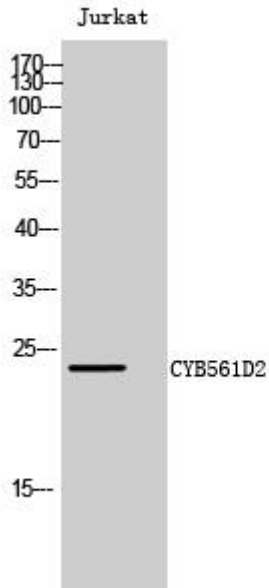
监督电话: 15950492658



### Usage suggestions

This product can be used in immunological reaction related experiments. For more information, please consult technical personnel.

## Products Images



Western Blot analysis of various cells using CYB561D2 Monoclonal Antibody

Nanjing BYabs science technology Co.,Ltd

网址: [www.njbybio.com](http://www.njbybio.com)

官方热线: 025-5229-8998

监督电话: 15950492658