



CYB561D1 Monoclonal Antibody

Catalog No	BYmab-00363
Isotype	IgG
Reactivity	Human;Rat;Mouse;
Applications	WB
Gene Name	CYB561D1
Protein Name	Cytochrome b561 domain-containing protein 1
Immunogen	The antiserum was produced against synthesized peptide derived from human CYB561D1. AA range:180-229
Specificity	CYB561D1 Monoclonal Antibody detects endogenous levels of CYB561D1 protein.
Formulation	Liquid in PBS containing 50% glycerol, 0.5% BSA and 0.02% sodium azide.
Source	Monoclonal, Mouse,IgG
Purification	The antibody was affinity-purified from mouse antiserum by affinity-chromatography using epitope-specific immunogen.
Dilution	WB 1:500-2000
Concentration	1 mg/ml
Purity	≥90%
Storage Stability	-20°C/1 year
Synonyms	CYB561D1; Cytochrome b561 domain-containing protein 1
Observed Band	23kD
Cell Pathway	Membrane ; Multi-pass membrane protein .
Tissue Specificity	Brain,Cerebellum,Liver,Tongue,
Function	cofactor:Binds 2 heme groups non-covalently.,similarity:Contains 1 cytochrome b561 domain.,
Background	cofactor:Binds 2 heme groups non-covalently.,similarity:Contains 1 cytochrome b561 domain.,
matters needing attention	Avoid repeated freezing and thawing!

Nanjing BYabscience technology Co.,Ltd

网址: www.njbybio.com

官方热线: 025-5229-8998

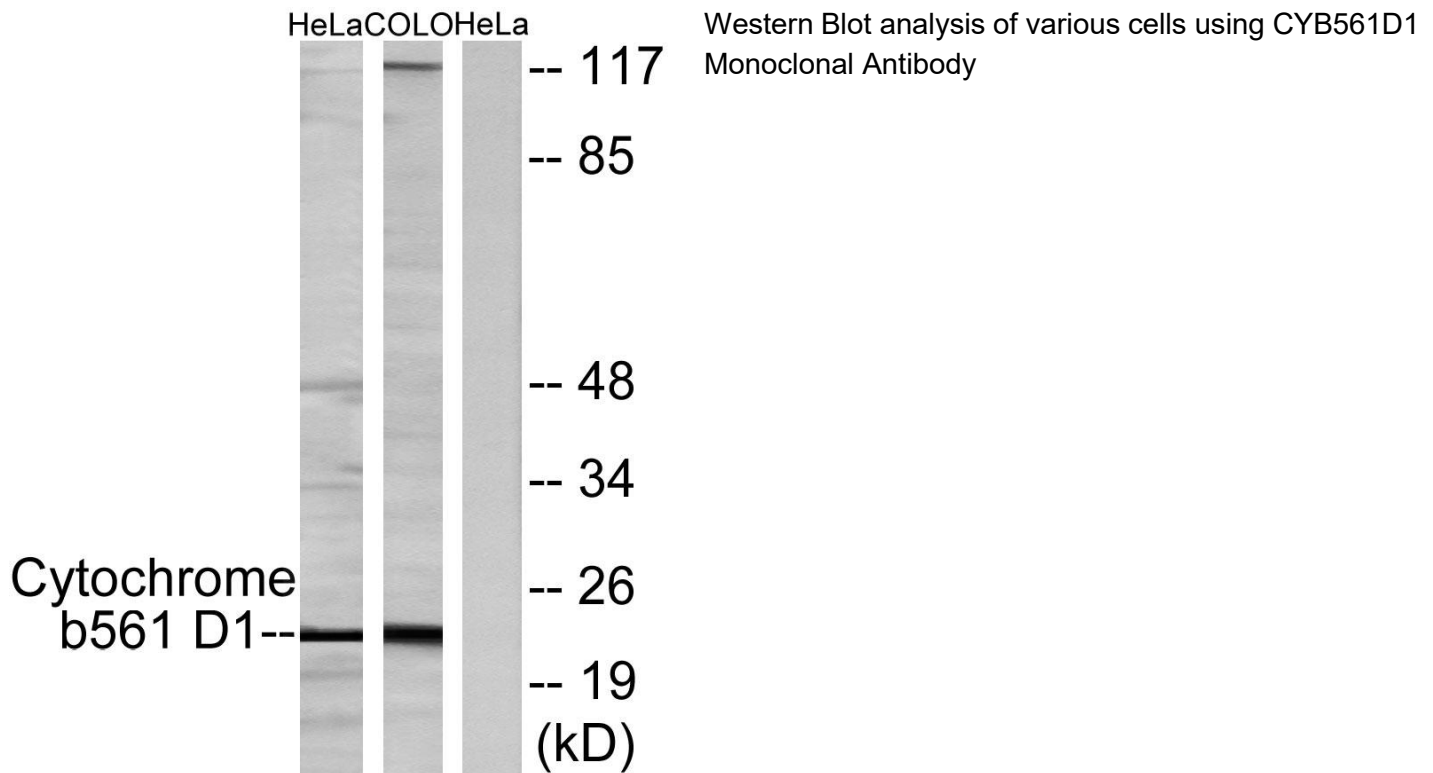
监督电话: 15950492658



Usage suggestions

This product can be used in immunological reaction related experiments. For more information, please consult technical personnel.

Products Images



Nanjing BYabscience technology Co.,Ltd

网址: www.njbybio.com

官方热线: 025-5229-8998

监督电话: 15950492658