



CAGE-1 Monoclonal Antibody

Catalog No	BYmab-00340
Isotype	IgG
Reactivity	Human;Rat;Mouse;
Applications	WB
Gene Name	CAGE1
Protein Name	Cancer-associated gene 1 protein
Immunogen	The antiserum was produced against synthesized peptide derived from human CAGE1. AA range:711-760
Specificity	CAGE-1 Monoclonal Antibody detects endogenous levels of CAGE-1 protein.
Formulation	Liquid in PBS containing 50% glycerol, 0.5% BSA and 0.02% sodium azide.
Source	Monoclonal, Mouse,IgG
Purification	The antibody was affinity-purified from mouse antiserum by affinity-chromatography using epitope-specific immunogen.
Dilution	WB 1:500-2000
Concentration	1 mg/ml
Purity	≥90%
Storage Stability	-20°C/1 year
Synonyms	CAGE1; CTAG3; Cancer-associated gene 1 protein; CAGE-1; Cancer/testis antigen 3; CT3
Observed Band	90kD
Cell Pathway	
Tissue Specificity	Testis-specific expression in normal tissues, but wide expression among cancer tissues and cell lines.
Function	tissue specificity:Testis-specific expression in normal tissues, but wide expression among cancer tissues and cell lines.,
Background	tissue specificity:Testis-specific expression in normal tissues, but wide expression among cancer tissues and cell lines.,
matters needing attention	Avoid repeated freezing and thawing!

Nanjing BYabscience technology Co.,Ltd

网址: www.njbybio.com

官方热线: 025-5229-8998

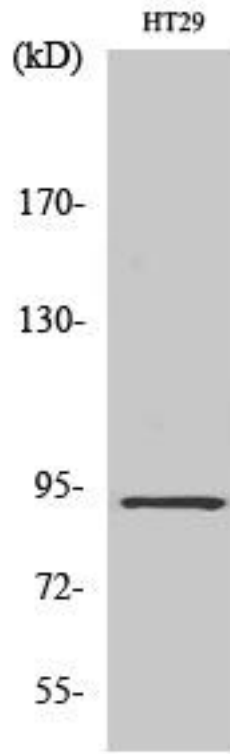
监督电话: 15950492658



Usage suggestions

This product can be used in immunological reaction related experiments. For more information, please consult technical personnel.

Products Images



Western Blot analysis of various cells using CAGE-1 Monoclonal Antibody