



# BCL2L12 Monoclonal Antibody

<b>Catalog No</b>	BYmab-00323
<b>Isotype</b>	IgG
<b>Reactivity</b>	Human;Mouse
<b>Applications</b>	WB
<b>Gene Name</b>	BCL2L12
<b>Protein Name</b>	Bcl-2-like protein 12
<b>Immunogen</b>	Synthesized peptide derived from BCL2L12 . at AA range: 60-140
<b>Specificity</b>	BCL2L12 Monoclonal Antibody detects endogenous levels of BCL2L12 protein.
<b>Formulation</b>	Liquid in PBS containing 50% glycerol, 0.5% BSA and 0.02% sodium azide.
<b>Source</b>	Monoclonal, Mouse,IgG
<b>Purification</b>	The antibody was affinity-purified from mouse antiserum by affinity-chromatography using epitope-specific immunogen.
<b>Dilution</b>	WB 1:500-2000
<b>Concentration</b>	1 mg/ml
<b>Purity</b>	≥90%
<b>Storage Stability</b>	-20°C/1 year
<b>Synonyms</b>	BCL2L12; BPR; Bcl-2-like protein 12; Bcl2-L-12; Bcl-2-related proline-rich protein
<b>Observed Band</b>	34kD
<b>Cell Pathway</b>	nucleus,membrane,
<b>Tissue Specificity</b>	Expressed mainly in breast, thymus, prostate, fetal liver, colon, placenta, pancreas, small intestine, spinal cord, kidney, and bone marrow and to a lesser extent in many other tissues. Isoform 2 is primarily expressed in skeletal muscle.
<b>Function</b>	similarity:Belongs to the Bcl-2 family.,tissue specificity:Expressed mainly in breast, thymus, prostate, fetal liver, colon, placenta, pancreas, small intestine, spinal cord, kidney, and bone marrow and to a lesser extent in many other tissues. Isoform 2 is primarily expressed in skeletal muscle.,
<b>Background</b>	This gene encodes a member of a family of proteins containing a Bcl-2 homology domain 2 (BH2). The encoded protein is an anti-apoptotic factor that acts as an inhibitor of caspases 3 and 7 in the cytoplasm. In the nucleus, it binds to the p53 tumor suppressor protein, preventing its association with target genes. Overexpression of this gene has been detected in a number of different cancers. There is a pseudogene for this gene on chromosome 3. Alternative splicing results

**Nanjing BYabscience technology Co.,Ltd**



in multiple transcript variants. [provided by RefSeq, Sep 2013],

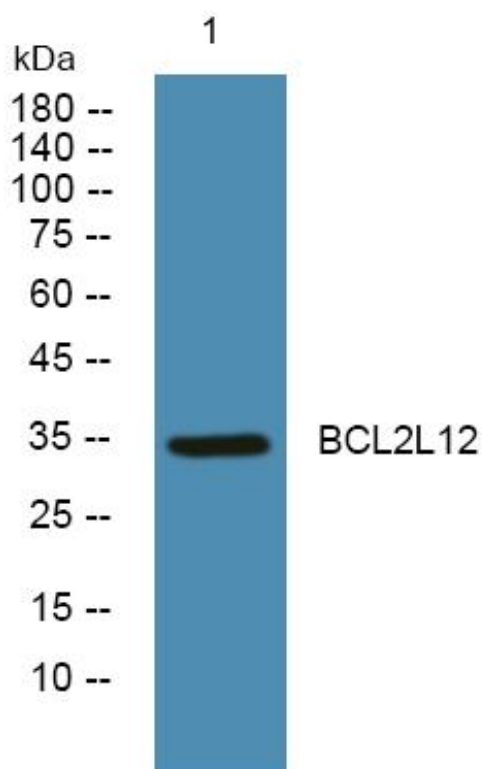
**matters needing attention**

Avoid repeated freezing and thawing!

**Usage suggestions**

This product can be used in immunological reaction related experiments. For more information, please consult technical personnel.

## Products Images



Western Blot analysis of various cells using BCL2L12 Monoclonal Antibody