



# API5 Monoclonal Antibody

<b>Catalog No</b>	BYmab-00301
<b>Isotype</b>	IgG
<b>Reactivity</b>	Human;Mouse
<b>Applications</b>	WB
<b>Gene Name</b>	API5
<b>Protein Name</b>	Apoptosis inhibitor 5
<b>Immunogen</b>	The antiserum was produced against synthesized peptide derived from human API-5. AA range:421-470
<b>Specificity</b>	API5 Monoclonal Antibody detects endogenous levels of API5 protein.
<b>Formulation</b>	Liquid in PBS containing 50% glycerol, 0.5% BSA and 0.02% sodium azide.
<b>Source</b>	Monoclonal, Mouse,IgG
<b>Purification</b>	The antibody was affinity-purified from mouse antiserum by affinity-chromatography using epitope-specific immunogen.
<b>Dilution</b>	WB 1:500-2000
<b>Concentration</b>	1 mg/ml
<b>Purity</b>	≥90%
<b>Storage Stability</b>	-20°C/1 year
<b>Synonyms</b>	API5; MIG8; Apoptosis inhibitor 5; API-5; Antiapoptosis clone 11 protein; AAC-11; Cell migration-inducing gene 8 protein; Fibroblast growth factor 2-interacting factor; FIF; Protein XAGL
<b>Observed Band</b>	58kD
<b>Cell Pathway</b>	Nucleus . Cytoplasm . Mainly nuclear. Can also be cytoplasmic.; [Isoform 3]: Cytoplasm.
<b>Tissue Specificity</b>	Expressed in all tissues tested, including heart, brain, placenta, lung, liver, skeletal muscle, kidney and pancreas. Highest levels in heart, pancreas and placenta. Highly expressed in several cancers. Preferentially expressed in squamous cell carcinoma versus adenocarcinoma in non-small cell lung cancer.
<b>Function</b>	alternative products:Additional isoforms seem to exist,domain:Two regions, an N-terminal (aa 96-107) and a C-terminal (aa 274-311) are required for binding FGF2.,function:Antiapoptotic factor that may have a role in protein assembly. Negatively regulates ACIN1. By binding to ACIN1, it suppresses ACIN1 cleavage from CASP3 and ACIN1-mediated DNA fragmentation. Also known to efficiently suppress E2F1-induced apoptosis. Its depletion enhances the cytotoxic action of

**Nanjing BYabscience technology Co.,Ltd**



the chemotherapeutic drugs.,sequence caution:Translation N-terminally shortened.,similarity:Belongs to the API5 family.,subcellular location:Mainly nuclear. Can also be cytoplasmic.,subunit:Homooligomer. Interacts with FGF2 and ACIN1.,tissue specificity:Expressed in all tissues tested, including heart, brain, placenta, lung, liver, skeletal muscle, kidney and pancreas. Highest levels in heart, pancreas and placenta. Highly expres

#### Background

This gene encodes an apoptosis inhibitory protein whose expression prevents apoptosis after growth factor deprivation. This protein suppresses the transcription factor E2F1-induced apoptosis and also interacts with, and negatively regulates Acinus, a nuclear factor involved in apoptotic DNA fragmentation. Its depletion enhances the cytotoxic action of the chemotherapeutic drugs. Multiple alternatively spliced transcript variants encoding different isoforms have been identified. [provided by RefSeq, Aug 2011],

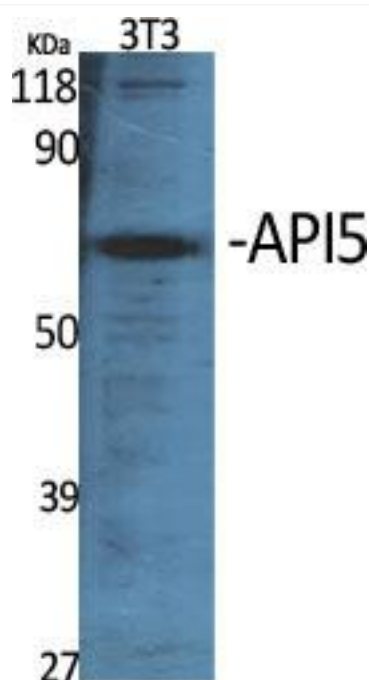
#### matters needing attention

Avoid repeated freezing and thawing!

#### Usage suggestions

This product can be used in immunological reaction related experiments. For more information, please consult technical personnel.

### Products Images



Western Blot analysis of various cells using API5 Monoclonal Antibody

Nanjing BYabs science technology Co.,Ltd

网址: [www.njbybio.com](http://www.njbybio.com)

官方热线: 025-5229-8998

监督电话: 15950492658