



ANKT Monoclonal Antibody

Catalog No	BYmab-00298
Isotype	IgG
Reactivity	Human;Rat;Mouse;
Applications	WB
Gene Name	NUSAP1
Protein Name	Nucleolar and spindle-associated protein 1
Immunogen	The antiserum was produced against synthesized peptide derived from human NUSAP1. AA range:392-441
Specificity	ANKT Monoclonal Antibody detects endogenous levels of ANKT protein.
Formulation	Liquid in PBS containing 50% glycerol, 0.5% BSA and 0.02% sodium azide.
Source	Monoclonal, Mouse,IgG
Purification	The antibody was affinity-purified from mouse antiserum by affinity-chromatography using epitope-specific immunogen.
Dilution	WB 1:500-2000
Concentration	1 mg/ml
Purity	≥90%
Storage Stability	-20°C/1 year
Synonyms	NUSAP1; ANKT; BM-037; Nucleolar and spindle-associated protein 1; NuSAP
Observed Band	49kD
Cell Pathway	Cytoplasm . Nucleus, nucleolus . Cytoplasm, cytoskeleton, spindle . Chromosome . Found in the cytoplasm and nucleolus during interphase and redistributes to the mitotic spindle in prometaphase (By similarity). Localizes to the mitotic spindle during anaphase and telophase then disappears from around the chromosomes during cytokinesis (By similarity). Localizes to multiple distinct regions of chromosomes throughout mitosis. .
Tissue Specificity	Bone marrow,Cervix,Epithelium,Fetal liver,Liver,Lung,Lymph,
Function	domain:The KEN box is required for the FZR1-dependent degradation of this protein subsequent to ubiquitination.,function:Microtubule-associated protein with the capacity to bundle and stabilize microtubules (By similarity). May associate with chromosomes and promote the organization of mitotic spindle microtubules around them.,PTM:Phosphorylated upon DNA damage, probably by ATM or ATR.,PTM:Ubiquitinated. Ubiquitination by FZR1 may lead to proteasome-dependent degradation of this protein.,similarity:Belongs to the

Nanjing BYabscience technology Co.,Ltd



NUSAP family.,subcellular location:Found in the cytoplasm and nucleolus during interphase and redistributes to the mitotic spindle in prometaphase (By similarity). Localizes to the mitotic spindle during anaphase and telophase then disappears from around the chromosomes during cytokinesis (By similarity). Localizes to multiple distinct regions of chromosomes throughout mitosis.,

Background

NUSAP1 is a nucleolar-spindle-associated protein that plays a role in spindle microtubule organization (Raemaekers et al., 2003 [PubMed 12963707]).[supplied by OMIM, Jun 2009],

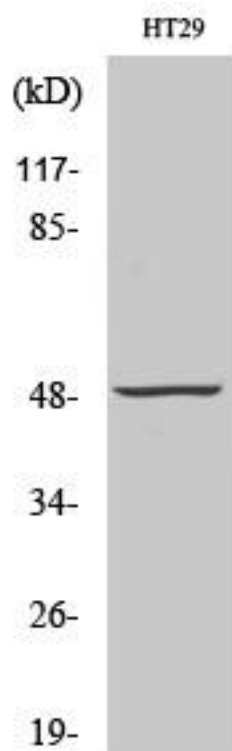
matters needing attention

Avoid repeated freezing and thawing!

Usage suggestions

This product can be used in immunological reaction related experiments. For more information, please consult technical personnel.

Products Images



Western Blot analysis of various cells using ANKT Monoclonal Antibody