



Carcinoembryonic antigen (ABT-CEA) Mouse mAb

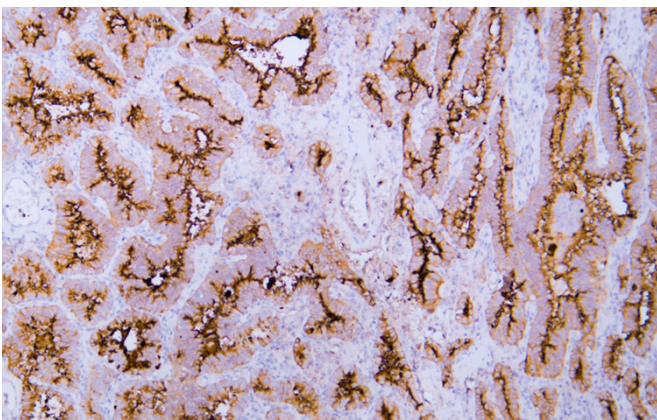
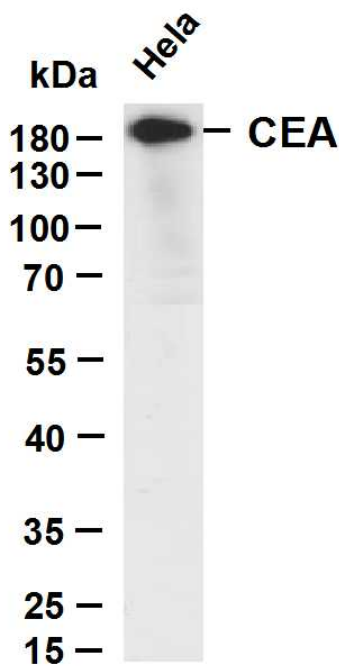
货号	BYab-17761
同位型	IgG
靶点	CEA
基因名称	CEACAM5 CEA
种属	Human
应用	IHC;WB;IF
蛋白名称	Carcinoembryonic antigen-related cell adhesion molecule 5 (Carcinoembryonic antigen) (CEA) (Meconium antigen 100) (CD antigen CD66e)
免疫原	Synthesized peptide derived from human carcinoembryonic antigen(CEA) AA range: 600-702
特异性	This antibody detects endogenous levels of human carcinoembryonic antigen(CEA). Antibody is negative with no cross reaction to BGP or NCA. Heat-induced epitope retrieval (HIER) TRIS-EDTA of pH8.0 was
组成	Liquid in PBS containing 50% glycerol, 0.5% BSA and 0.02% sodium azide.
来源	Mouse, Monoclonal/IgG2b, Kappa
稀释	IHC-p 1:200-400, WB 1:200-1000. IF 1:50-200
纯化工艺	The antibody was affinity-purified from mouse ascites by affinity-chromatography using specific immunogen.
背景	This gene encodes a cell surface glycoprotein that represents the founding member of the carcinoembryonic antigen (CEA) family of proteins. The encoded protein is used as a clinical biomarker for gastrointestinal cancers and may promote tumor development through its role as a cell adhesion molecule. Additionally, the encoded protein may regulate differentiation, apoptosis, and cell polarity. This gene is present in a CEA family gene cluster on chromosome 19. Alternative splicing results in multiple transcript variants. [provided by RefSeq, Jul 2015],
功能	function:Cell surface glycoprotein that plays a role in cell adhesion and in intracellular signaling. Receptor for E.coli Dr adhesins.,PTM:Complex immunoreactive glycoprotein with a MW of 180 kDa comprising 60% carbohydrate.,similarity:Belongs to the immunoglobulin superfamily. CEA family.,similarity:Contains 7 Ig-like (immunoglobulin-like) domains.,subunit:Homodimer. Binding of E.coli Dr adhesins leads to dissociation of the homodimer.,tissue specificity:Found in adenocarcinomas of endodermally derived digestive system epithelium and fetal colon.,
细胞定位	Cell membrane ; Lipid-anchor, GPI-anchor . Apical cell membrane . Cell surface . Localized to the apical glycocalyx surface. .
组织表达	Expressed in columnar epithelial and goblet cells of the colon (at protein level) (PubMed:10436421). Found in adenocarcinomas of endodermally derived digestive system epithelium and fetal colon.

Nanjing BYabscience technology Co.,Ltd



浓度	1 mg/ml
储存	-15°C to -25°C/1 year(Do not lower than -25°C)
有关注意事项	Avoid repeated freezing and thawing!
使用建议	This product can be used in immunological reaction related experiments. For more information, please consult technical personnel.

Products Images

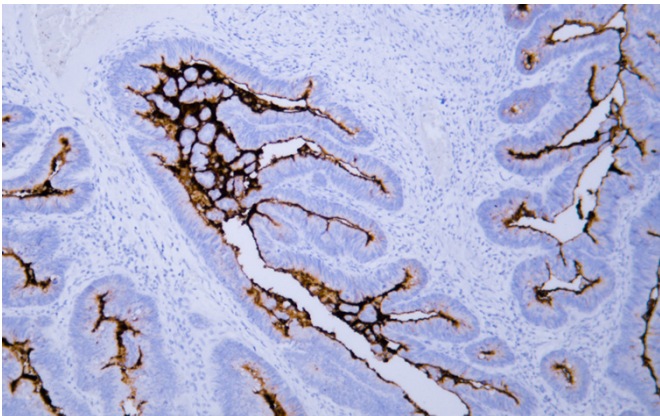
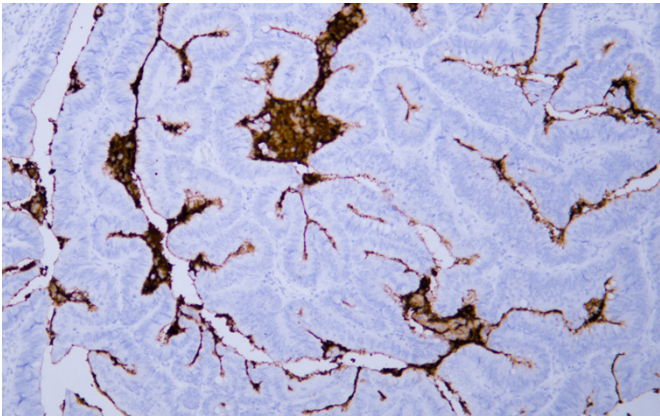
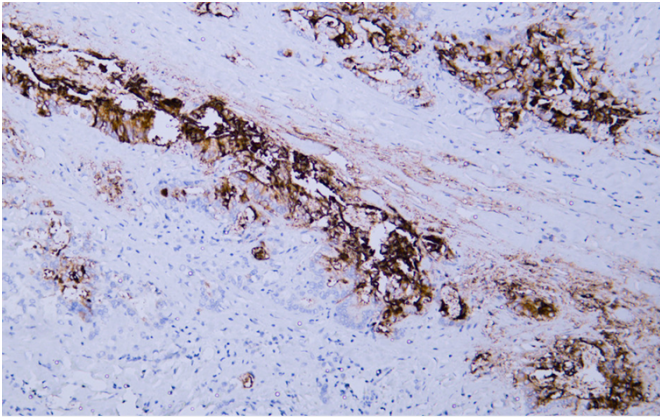


Nanjing BYabs science technology Co.,Ltd

网址: www.njbybio.com

官方热线: 025-5229-8998

监督电话: 15950492658



Nanjing BYabs science technology Co.,Ltd

网址: www.njbybio.com

官方热线: 025-5229-8998

监督电话: 15950492658