



# RASSF8 Polyclonal Antibody

<b>Catalog No</b>	BYab-16262
<b>Isotype</b>	IgG
<b>Reactivity</b>	Human;Rat
<b>Applications</b>	WB;ELISA
<b>Gene Name</b>	RASSF8
<b>Protein Name</b>	Ras association domain-containing protein 8
<b>Immunogen</b>	Synthesized peptide derived from RASSF8 . at AA range: 60-140
<b>Specificity</b>	RASSF8 Polyclonal Antibody detects endogenous levels of RASSF8 protein.
<b>Formulation</b>	Liquid in PBS containing 50% glycerol, 0.5% BSA and 0.02% sodium azide.
<b>Source</b>	Polyclonal, Rabbit,IgG
<b>Purification</b>	The antibody was affinity-purified from rabbit antiserum by affinity-chromatography using epitope-specific immunogen.
<b>Dilution</b>	Western Blot: 1/500 - 1/2000. ELISA: 1/40000. Not yet tested in other applications.
<b>Concentration</b>	1 mg/ml
<b>Purity</b>	≥90%
<b>Storage Stability</b>	-20°C/1 year
<b>Synonyms</b>	RASSF8; C12orf2; Ras association domain-containing protein 8; Carcinoma-associated protein HOJ-1
<b>Observed Band</b>	48kD
<b>Cell Pathway</b>	
<b>Tissue Specificity</b>	Widely expressed as a 6.2 kb transcript. A 2.2 kb alternatively spliced transcript is expressed exclusively in testis.
<b>Function</b>	disease:A chromosomal aberration involving RASSF8 is found in a complex type of synpolydactyly, also referred to as 3/3-prime/4 synpolydactyly associated with metacarpal and metatarsal synostoses [MIM:608180]. Reciprocal translocation t(12;22)(p11.2;q13.3) with FBLN1.,similarity:Contains 1 Ras-associating domain.,tissue specificity:Widely expressed as a 6.2 kb transcript. A 2.2 kb alternatively spliced transcript is expressed exclusively in testis.,
<b>Background</b>	This gene encodes a member of the Ras-association domain family (RASSF) of tumor suppressor proteins. This gene is essential for maintaining adherens junction function in epithelial cells and has a role in epithelial cell migration. It is a lung tumor suppressor gene candidate. A chromosomal translocation

Nanjing BYabscience technology Co.,Ltd



t(12;22)(p11.2;q13.3) leading to the fusion of this gene and the FBLN1 gene is found in a complex type of synpolydactyly. Multiple alternatively spliced transcript variants encoding different isoforms have been found for this gene. [provided by RefSeq, May 2011],

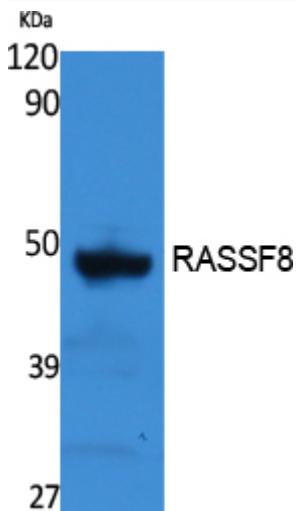
**matters needing attention**

Avoid repeated freezing and thawing!

**Usage suggestions**

This product can be used in immunological reaction related experiments. For more information, please consult technical personnel.

## Products Images



Western Blot analysis of extracts from rat stomach, using RASSF8 Polyclonal Antibody. Secondary antibody(catalog#:RS0002) was diluted at 1:20000