



# FGF-18 Polyclonal Antibody

<b>Catalog No</b>	BYab-16001
<b>Isotype</b>	IgG
<b>Reactivity</b>	Human;Mouse;Rat,Sheep
<b>Applications</b>	WB;IHC;IF;ELISA
<b>Gene Name</b>	FGF18
<b>Protein Name</b>	Fibroblast growth factor 18
<b>Immunogen</b>	The antiserum was produced against synthesized peptide derived from the C-terminal region of human FGF18. AA range:158-207
<b>Specificity</b>	FGF-18 Polyclonal Antibody detects endogenous levels of FGF-18 protein.
<b>Formulation</b>	Liquid in PBS containing 50% glycerol, 0.5% BSA and 0.02% sodium azide.
<b>Source</b>	Polyclonal, Rabbit,IgG
<b>Purification</b>	The antibody was affinity-purified from rabbit antiserum by affinity-chromatography using epitope-specific immunogen.
<b>Dilution</b>	WB: 1/500 - 1/2000. IHC-p: 1:100-300 ELISA: 1/20000.. IF 1:50-200
<b>Concentration</b>	1 mg/ml
<b>Purity</b>	≥90%
<b>Storage Stability</b>	-20°C/1 year
<b>Synonyms</b>	FGF18; Fibroblast growth factor 18; FGF-18; zFGF5
<b>Observed Band</b>	28kD
<b>Cell Pathway</b>	Secreted .
<b>Tissue Specificity</b>	Lung,Ovary,
<b>Function</b>	function:Stimulates hepatic and intestinal proliferation.,similarity:Belongs to the heparin-binding growth factors family.,
<b>Background</b>	The protein encoded by this gene is a member of the fibroblast growth factor (FGF) family. FGF family members possess broad mitogenic and cell survival activities, and are involved in a variety of biological processes, including embryonic development, cell growth, morphogenesis, tissue repair, tumor growth, and invasion. It has been shown in vitro that this protein is able to induce neurite outgrowth in PC12 cells. Studies of the similar proteins in mouse and chick suggested that this protein is a pleiotropic growth factor that stimulates proliferation in a number of tissues, most notably the liver and small intestine.

Nanjing BYabscience technology Co.,Ltd



Knockout studies of the similar gene in mice implied the role of this protein in regulating proliferation and differentiation of midline cerebellar structures. [provided by RefSeq, Jul 2008],

**matters needing attention**

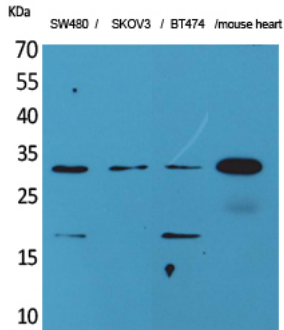
Avoid repeated freezing and thawing!

**Usage suggestions**

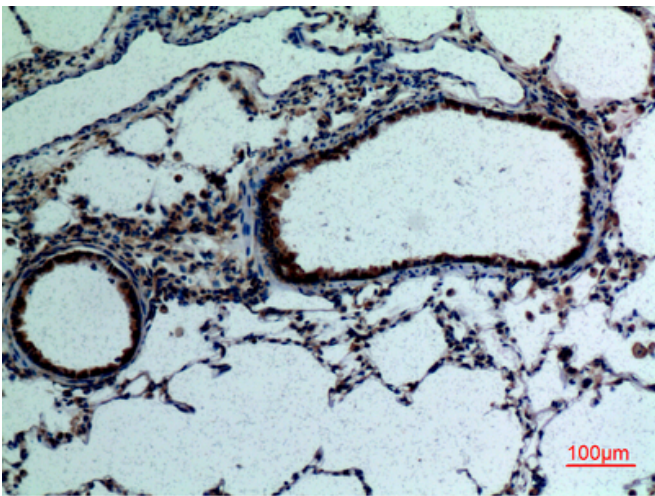
This product can be used in immunological reaction related experiments. For more information, please consult technical personnel.



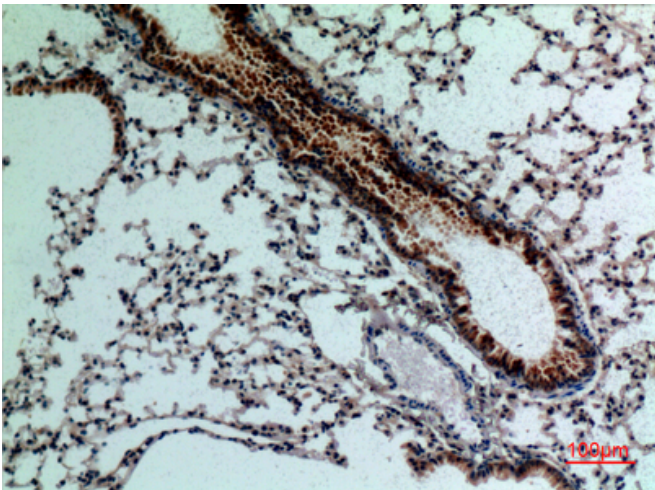
## Products Images



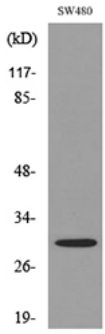
Western Blot analysis of SW480, SKOV3, BT474, mouse heart cells using FGF-18 Polyclonal Antibody. Secondary antibody(catalog#:RS0002) was diluted at 1:20000 cells nucleus extracted by Minute TM Cytoplasmic and Nuclear Fractionation kit (SC-003, Inventbiotech, MN, USA).



Immunohistochemical analysis of paraffin-embedded rat-lung, antibody was diluted at 1:100



Immunohistochemical analysis of paraffin-embedded mouse-lung, antibody was diluted at 1:100



Western blot analysis of lysate from SW480 cells, using FGF18 Antibody.