



# Msx-1 Monoclonal Antibody

Catalog No	BYab-15731
Isotype	IgG
Reactivity	Human
Applications	WB;ELISA
Gene Name	MSX1
Protein Name	Homeobox protein MSX-1
Immunogen	Purified recombinant fragment of human Msx-1 expressed in E. Coli.
Specificity	Msx-1 Monoclonal Antibody detects endogenous levels of Msx-1 protein.
Formulation	Ascitic fluid containing 0.03% sodium azide,0.5% BSA, 50%glycerol.
Source	Monoclonal, Mouse
Purification	Affinity purification
Dilution	Western Blot: 1/500 - 1/2000. ELISA: 1/10000. Not yet tested in other applications.
Concentration	1 mg/ml
Purity	≥90%
Storage Stability	-20°C/1 year
Synonyms	MSX1; HOX7; Homeobox protein MSX-1; Homeobox protein Hox-7; Msh homeobox 1-like protein
Observed Band	
Cell Pathway	Nucleus.
Tissue Specificity	Expressed in the developing nail bed mesenchyme.
Function	disease:A chromosomal aberration involving MSX1 is a cause of Wolf-Hirschhorn syndrome (WHS) [MIM:194190]. WHS is caused by sub-telomeric deletions in the short arm of chromosome 4. WHS is characterized by profound mental retardation, heart defects, and facial clefting.,disease:Defects in MSX1 are a cause of autosomal dominant hypodontia (HYD1) [MIM:106600]; also known as familial or selective tooth agenesis. Absence of less than 6 teeth is referred to as hypodontia. Agenesis of one or more teeth constitutes one of the most common developmental anomalies in man. Reported incidences vary from 1.6% to 9.6%, excluding third molar (Wisdom tooth) agenesis, which occurs in 20% of the population.,disease:Defects in MSX1 are the cause of non-syndromic orofacial cleft type 5 (OFC5) [MIM:608874]; also called non-syndromic cleft lip with or without cleft palate 5. Non-syndromic orofacial cleft is a

Nanjing BYabscience technology Co.,Ltd



## Background

This gene encodes a member of the muscle segment homeobox gene family. The encoded protein functions as a transcriptional repressor during embryogenesis through interactions with components of the core transcription complex and other homeoproteins. It may also have roles in limb-pattern formation, craniofacial development, particularly odontogenesis, and tumor growth inhibition. Mutations in this gene, which was once known as homeobox 7, have been associated with nonsyndromic cleft lip with or without cleft palate 5, Witkop syndrome, Wolf-Hirschorn syndrome, and autosomal dominant hypodontia. [provided by RefSeq, Jul 2008],

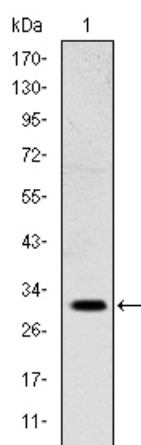
## matters needing attention

Avoid repeated freezing and thawing!

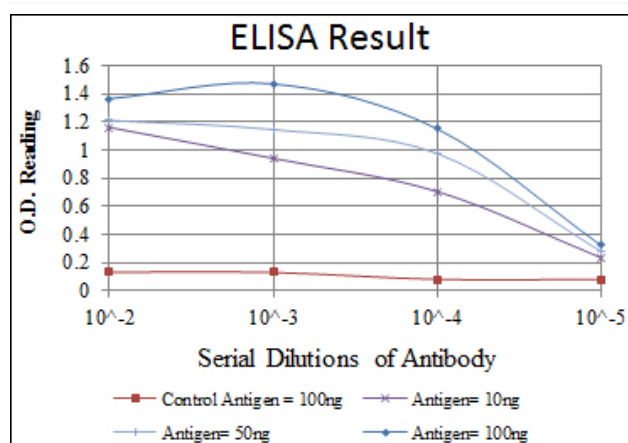
## Usage suggestions

This product can be used in immunological reaction related experiments. For more information, please consult technical personnel.

## Products Images



Western Blot analysis using Msx-1 Monoclonal Antibody against NTERA-2 cell lysate.



Nanjing BYabs science technology Co.,Ltd