



hCG α (ABT183) Mouse mAb

Catalog No	BYab-15688
Isotype	IgG
Reactivity	Human; Predict react with Mouse, Rat
Applications	IHC
Gene Name	CGA
Protein Name	Anterior pituitary glycoprotein hormones common subunit alpha;CG alpha;CG-alpha;cga;Choriogonadotropin alpha chain;Chorionic Gonadotrophin Alpha;Chorionic Gonadotrophin Alpha Subunit;Chorionic gonadot
Immunogen	Synthesized peptide derived from human hCG α
Specificity	The antibody can specifically recognize α subunits of human CG, LH, FSH and TSH proteins.
Formulation	PBS, pH7.2, 0.03% Porcolin 300, containing stabilizing protein
Source	Monoclonal Mouse IgG3, Kappa
Purification	The antibody was affinity-purified from mouse ascites by affinity-chromatography using specific immunogen.
Dilution	IHC-p 1:200-400,
Concentration	1 mg/ml
Purity	$\geq 90\%$
Storage Stability	-20°C/1 year
Synonyms	Anterior pituitary glycoprotein hormones common subunit alpha;CG alpha;CG-alpha;cga;Choriogonadotropin alpha chain;Chorionic Gonadotrophin Alpha;Chorionic Gonadotrophin Alpha Subunit;Chorionic gonadotrophin subunit alpha;chorionic gonadotropin, alpha polypeptide;Follicle-stimulating hormone alpha;Follicle-stimulating hormone alpha chain;follicle-stimulating hormone alpha subunit;Follitropin alpha;Follitropin alpha chain;FSH Alpha;FSH-alpha;FSHA;GLHA_HUMAN;Glycoprotein hormones alpha chain;Glycoprotein Hormones Alpha Polypeptide;GPH Alpha;GPHa;GPHA1;HCG;hyrotropin alpha;LH-alpha;LHA;LSH alpha;LSH-alpha;Luteinizing hormone alpha;Luteinizing hormone alpha chain;Lutropin alpha;Lutropin alpha chain;Thyroid Stimulating Hormone Alpha;Thyroid Stimulating Hormone Alpha Chain;Thyroid-stimulating hormone alpha chain;Thyrotropin alpha chain;TSH Alpha;TSH-alpha;TSHA

Nanjing BYabs science technology Co.,Ltd

**Observed Band****Cell Pathway** Cytoplasmic**Tissue Specificity** Placenta/ Pituitary**Function** online information:Proteic grace - Issue 77 of December 2006,similarity:Belongs to the glycoprotein hormones subunit alpha family.,subunit:Heterodimer of a common alpha chain and a unique beta chain which confers biological specificity to thyrotropin, lutropin, follitropin and gonadotropin.,**Background** The four human glycoprotein hormones chorionic gonadotropin (CG), luteinizing hormone (LH), follicle stimulating hormone (FSH), and thyroid stimulating hormone (TSH) are dimers consisting of alpha and beta subunits that are associated noncovalently. The alpha subunits of these hormones are identical, however, their beta chains are unique and confer biological specificity. The protein encoded by this gene is the alpha subunit and belongs to the glycoprotein hormones alpha chain family. Two transcript variants encoding different isoforms have been found for this gene. [provided by RefSeq, Nov 2011],**matters needing attention** Avoid repeated freezing and thawing!**Usage suggestions** This product can be used in immunological reaction related experiments. For more information, please consult technical personnel.

Nanjing BYabscience technology Co.,Ltd

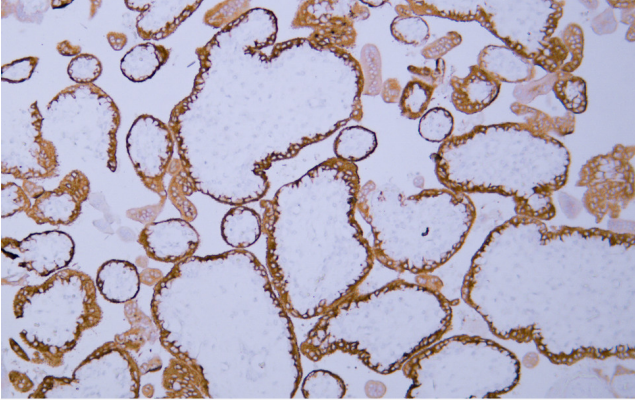
网址: www.njbybio.com

官方热线: 025-5229-8998

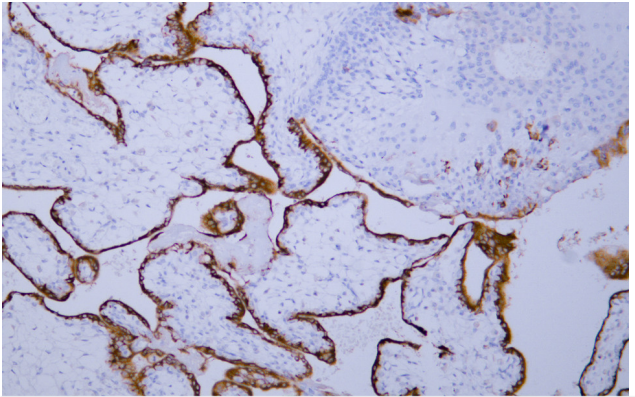
监督电话: 15950492658



Products Images



Human placenta tissue was stained with Anti-hCG α (ABT183) Antibody



Human placenta tissue was stained with Anti-hCG α (ABT183) Antibody