



# Desmin (ABT479) Mouse mAb

Catalog No	BYab-15165
Isotype	IgG
Reactivity	Human;Mouse;Rat
Applications	IHC;WB;
Gene Name	DES
Protein Name	CMD1I;CSM1;CSM2;DES;DESM_HUMAN;Desmin;FLJ12025;FLJ39719;FLJ41013;FLJ41793;Intermediate filament protein;OTTHUMP00000064865
Immunogen	Synthesized peptide derived from human Desmin
Specificity	The antibody can specifically recognize human Desmin protein.
Formulation	PBS, pH7.2, 0.03% Porcolin 300, containing stabilizing protein
Source	Monoclonal Mouse IgG2b, kappa
Purification	The antibody was affinity-purified from mouse ascites by affinity-chromatography using specific immunogen.
Dilution	IHC-p 1:200-400, WB 1:200-1000,
Concentration	1 mg/ml
Purity	≥90%
Storage Stability	-20°C/1 year
Synonyms	CMD1I;CSM1;CSM2;DES;DESM_HUMAN;Desmin;FLJ12025;FLJ39719;FLJ41013;FLJ41793;Intermediate filament protein;OTTHUMP00000064865
Observed Band	
Cell Pathway	Cytoplasmic
Tissue Specificity	Appendix/ Colon
Function	disease:Defects in DES are the cause of cardiomyopathy dilated type 1I (CMD1I) [MIM:604765]. Dilated cardiomyopathy is a disorder characterized by ventricular dilation and impaired systolic function, resulting in congestive heart failure and arrhythmia. Patients are at risk of premature death.,disease:Defects in DES are the cause of desmin-related cardio-skeletal myopathy (CSM) [MIM:601419]; also known as desmin-related myopathy (DRM). CSM is characterized by skeletal muscle weakness associated with cardiac conduction blocks, arrhythmias, restrictive heart failure, and by intracytoplasmic accumulation of desmin-reactive deposits in cardiac and skeletal muscle cells. A desmin-related myopathy can have a distal onset, it is then known as hereditary distal myopathy (HDM).,disease:Defects in DES are the cause of neurogenic scapuloperoneal

Nanjing BYabscience technology Co.,Ltd



syndrome Kaeser type (Kaeser syndrome) [MIM:181400].

**Background**

This gene encodes a muscle-specific class III intermediate filament. Homopolymers of this protein form a stable intracytoplasmic filamentous network connecting myofibrils to each other and to the plasma membrane. Mutations in this gene are associated with desmin-related myopathy, a familial cardiac and skeletal myopathy (CSM), and with distal myopathies. [provided by RefSeq, Jul 2008],

**matters needing attention**

Avoid repeated freezing and thawing!

**Usage suggestions**

This product can be used in immunological reaction related experiments. For more information, please consult technical personnel.

Nanjing BYabscience technology Co.,Ltd

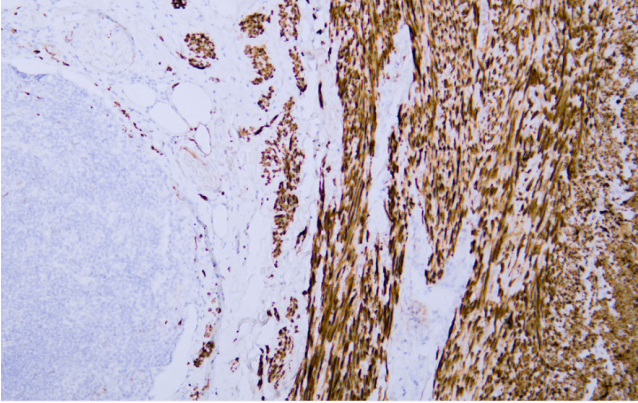
网址: [www.njbybio.com](http://www.njbybio.com)

官方热线: 025-5229-8998

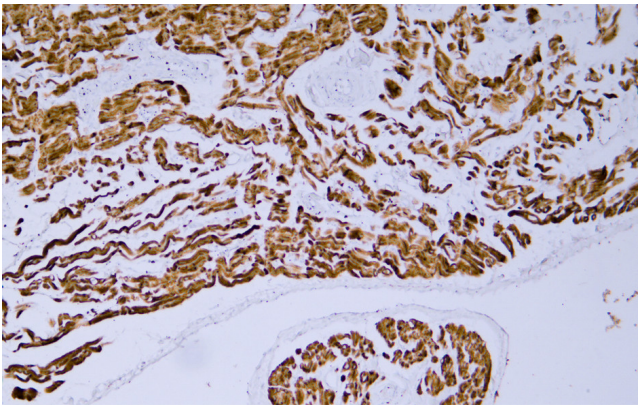
监督电话: 15950492658



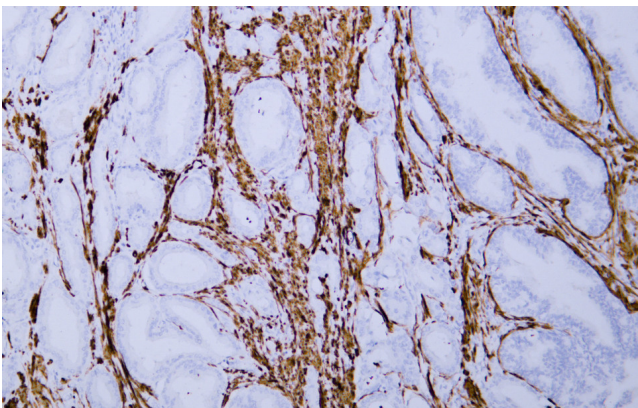
## Products Images



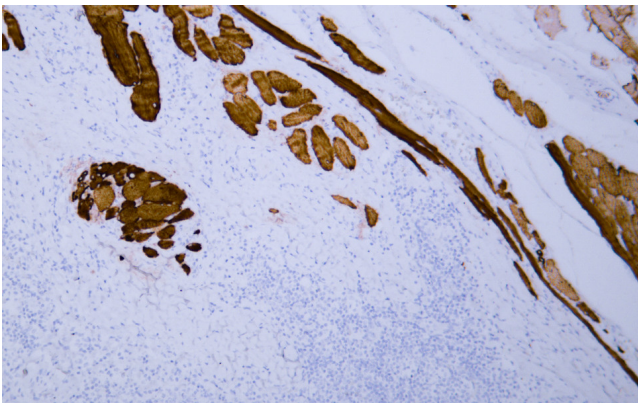
Human appendix tissue was stained with Anti-Desmin (ABT479) Antibody



Human heart muscle tissue was stained with Anti-Desmin (ABT479) Antibody



Human prostate tissue was stained with Anti-Desmin (ABT479) Antibody



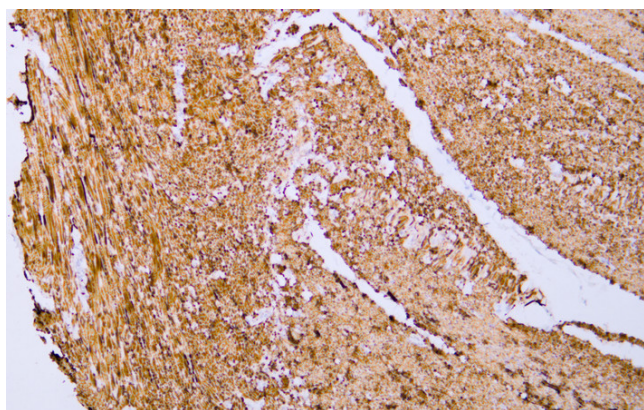
Human skeletal muscle tissue was stained with Anti-Desmin (ABT479) Antibody

Nanjing BYabscience technology Co.,Ltd

网址: [www.njbybio.com](http://www.njbybio.com)

官方热线: 025-5229-8998

监督电话: 15950492658



Human smooth muscle tissue was stained with Anti-Desmin (ABT479) Antibody