



Intestinal Cell Kinase (phospho Tyr159) Polyclonal Antibody

Catalog No	BYab-14390
Isotype	IgG
Reactivity	Human;Mouse;Rat
Applications	WB;ELISA;IHC
Gene Name	ICK
Protein Name	Serine/threonine-protein kinase ICK
Immunogen	The antiserum was produced against synthesized peptide derived from human ICK around the phosphorylation site of Tyr159. AA range:125-174
Specificity	Phospho-Intestinal Cell Kinase (Y159) Polyclonal Antibody detects endogenous levels of Intestinal Cell Kinase protein only when phosphorylated at Y159.
Formulation	Liquid in PBS containing 50% glycerol, 0.5% BSA and 0.02% sodium azide.
Source	Polyclonal, Rabbit,IgG
Purification	The antibody was affinity-purified from rabbit antiserum by affinity-chromatography using epitope-specific immunogen.
Dilution	WB 1:500-2000;IHC-p 1:50-300; ELISA 2000-20000
Concentration	1 mg/ml
Purity	≥90%
Storage Stability	-20°C/1 year
Synonyms	ICK; KIAA0936; Serine/threonine-protein kinase ICK; Intestinal cell kinase; hICK; Laryngeal cancer kinase 2; LCK2; MAK-related kinase; MRK
Observed Band	71kD
Cell Pathway	Nucleus . Cytoplasm, cytosol . Cell projection, cilium . Cytoplasm, cytoskeleton, cilium basal body . Also found at the ciliary tip (PubMed:24797473). Nuclear localization has been observed with a GFP-tagged construct in transfected HeLa cells (PubMed:12103360, PubMed:19185282). .; [Isoform 2]: Cytoplasm . Predominant cytoplasmic localization has been observed with a N-terminally GFP-tagged construct. .
Tissue Specificity	Expressed in heart, brain, placenta, pancreas, thymus, prostate, testis, ovary, small intestine and colon, with highest levels in placenta and testis. Not detected in spleen. Also expressed in many cancer cell lines.
Function	catalytic activity:ATP + a protein = ADP + a phosphoprotein.,cofactor:Magnesium.,disease:Defects in ICK are the cause of endocrine-cerebroosteodysplasia (ECO) [MIM:612651]. ECO is a previously

Nanjing BYabscience technology Co.,Ltd



unidentified neonatal lethal recessive disorder with multiple anomalies involving the endocrine, cerebral, and skeletal systems.,function:May play a key role in the development of multiple organ systems and particularly in cardiac development.,PTM:Autophosphorylated on serine and threonine residues. May play a role in enzyme activation.,similarity:Belongs to the protein kinase superfamily.,similarity:Belongs to the protein kinase superfamily. CMGC Ser/Thr protein kinase family. CDC2/CDKX subfamily.,similarity:Contains 1 protein kinase domain.,subcellular location:Nuclear localization has been observed with a GFP-tagged construct in transfected HeLa cells (PubMed:12103360). Cytosolic localization wa

Background

Eukaryotic protein kinases are enzymes that belong to a very extensive family of proteins which share a conserved catalytic core common with both serine/threonine and tyrosine protein kinases. This gene encodes an intestinal serine/threonine kinase harboring a dual phosphorylation site found in mitogen-activating protein (MAP) kinases. The protein localizes to the intestinal crypt region and is thought to be important in intestinal epithelial cell proliferation and differentiation. Alternative splicing has been observed at this locus and two variants, encoding the same isoform, have been identified. [provided by RefSeq, Jul 2008],

matters needing attention

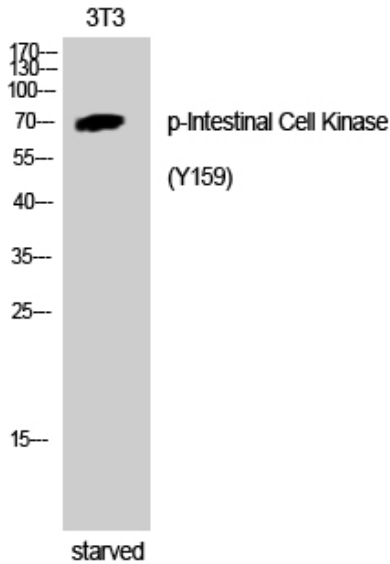
Avoid repeated freezing and thawing!

Usage suggestions

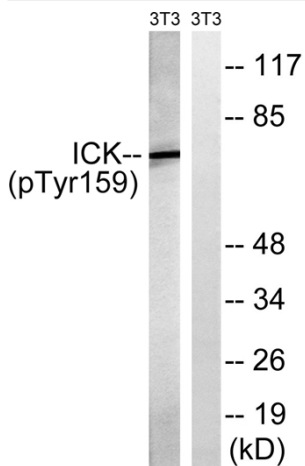
This product can be used in immunological reaction related experiments. For more information, please consult technical personnel.



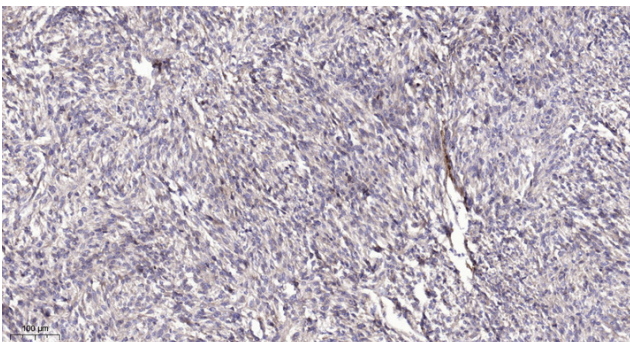
Products Images



Western Blot analysis of 3T3 cells using Phospho-Intestinal Cell Kinase (Y159) Polyclonal Antibody



Western blot analysis of lysates from NIH/3T3 cells treated with starved 24h, using ICK (Phospho-Tyr159) Antibody. The lane on the right is blocked with the phospho peptide.



Immunohistochemical analysis of paraffin-embedded human Colon cancer. 1, Antibody was diluted at 1:200(4° overnight). 2, Tris-EDTA,pH9.0 was used for antigen retrieval. 3,Secondary antibody was diluted at 1:200(room temperature, 45min).