



IKKε Monoclonal Antibody

Catalog No	BYab-14162
Isotype	IgG
Reactivity	Human
Applications	WB;ELISA
Gene Name	IKBKE
Protein Name	Inhibitor of nuclear factor kappa-B kinase subunit epsilon
Immunogen	Purified recombinant fragment of IKKε (aa1-257) expressed in E. Coli.
Specificity	IKKε Monoclonal Antibody detects endogenous levels of IKKε protein.
Formulation	Ascitic fluid containing 0.03% sodium azide,0.5% BSA, 50%glycerol.
Source	Monoclonal, Mouse
Purification	Affinity purification
Dilution	Western Blot: 1/500 - 1/2000. ELISA: 1/10000. Not yet tested in other applications.
Concentration	1 mg/ml
Purity	≥90%
Storage Stability	-20°C/1 year
Synonyms	IKBKE; IKKE; IKKI; KIAA0151; Inhibitor of nuclear factor kappa-B kinase subunit epsilon; I-kappa-B kinase epsilon; IKK-E; IKK-epsilon; IkbKE; Inducible I kappa-B kinase; IKK-i
Observed Band	
Cell Pathway	Cytoplasm . Nucleus. Nucleus, PML body . Targeting to PML nuclear bodies upon DNA damage is TOPORS-dependent (PubMed:20188669). Located diffusely throughout the cytoplasm but locates to punctate cytoplasmic bodies when coexpressed with TRIM6 (PubMed:24882218). .
Tissue Specificity	Highly expressed in spleen followed by thymus, peripheral blood leukocytes, pancreas, placenta. Weakly expressed in lung, kidney, prostate, ovary and colon.
Function	catalytic activity:ATP + [I-kappa-B protein] = ADP + [I-kappa-B phosphoprotein].,function:Phosphorylates inhibitors of NF-kappa-B thus leading to the dissociation of the inhibitor/NF-kappa-B complex and ultimately the degradation of the inhibitor. May play a special role in the immune response.,PTM:Autophosphorylated.,similarity:Belongs to the protein kinase superfamily. Ser/Thr protein kinase family. I-kappa-B kinase subfamily.,similarity:Contains 1 protein kinase domain.,subunit:May interact with MAVS/IPS1. Interacts with AZI2. Interacts with SIKE. Interacts with

Nanjing BYabs science technology Co.,Ltd



TICAM1/TRIF, IRF3 and DDX58/RIG-I, interactions are disrupted by the interaction between IKBKE and SIKE.,tissue specificity:Highly expressed in spleen followed by thymus, peripheral blood leukocytes, pancreas, placenta. Weakly expressed in lung, kidney, prostate, ovary and colon.,

Background

IKBKE is a noncanonical I-kappa-B (see MIM 164008) kinase (IKK) that is essential for regulating antiviral signaling pathways. IKBKE has also been identified as a breast cancer (MIM 114480) oncogene and is amplified and overexpressed in over 30% of breast carcinomas and breast cancer cell lines (Hutti et al., 2009 [PubMed 19481526]).[supplied by OMIM, Oct 2009],

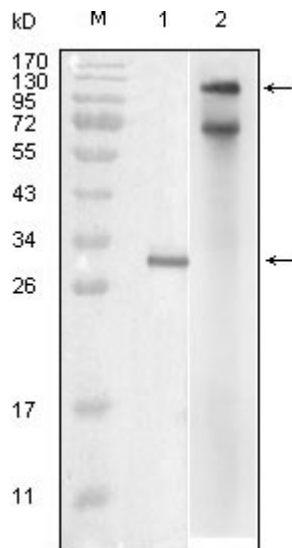
matters needing attention

Avoid repeated freezing and thawing!

Usage suggestions

This product can be used in immunological reaction related experiments. For more information, please consult technical personnel.

Products Images



Western Blot analysis using IKKε Monoclonal Antibody against truncated IKKε recombinant protein (1) and full-length IKKε(aa1-716)-hlgGFc transfected COS7 cell lysate (2).