



# PTH/PTHrP-R Monoclonal Antibody

Catalog No	BYab-12938
Isotype	IgG
Reactivity	Human
Applications	WB;IHC;IF;ELISA
Gene Name	PTH1R
Protein Name	Parathyroid hormone/parathyroid hormone-related peptide receptor
Immunogen	Purified recombinant fragment of human PTH/PTHrP-R expressed in E. Coli.
Specificity	PTH/PTHrP-R Monoclonal Antibody detects endogenous levels of PTH/PTHrP-R protein.
Formulation	Ascitic fluid containing 0.03% sodium azide,0.5% BSA, 50%glycerol.
Source	Monoclonal, Mouse
Purification	Affinity purification
Dilution	Western Blot: 1/500 - 1/2000. Immunohistochemistry: 1/200 - 1/1000. Immunofluorescence: 1/200 - 1/1000. ELISA: 1/10000. Not yet tested in other applications.
Concentration	1 mg/ml
Purity	≥90%
Storage Stability	-20°C/1 year
Synonyms	PTH1R; PTHR; PTHR1; Parathyroid hormone/parathyroid hormone-related peptide receptor; PTH/PTHrP type I receptor; PTH/PTHr receptor; Parathyroid hormone 1 receptor; PTH1 receptor
Observed Band	
Cell Pathway	Cell membrane ; Multi-pass membrane protein .
Tissue Specificity	Expressed in most tissues. Most abundant in kidney, bone and liver.
Function	disease:Defects in PTH1R are a cause of primary failure of tooth eruption (PFE) [MIM:125350]. PFE is a rare condition that has high penetrance and variable expressivity and in which tooth retention occurs without evidence of any obvious mechanical interference. Instead, malfunction of the eruptive mechanism itself appears to cause nonankylosed permanent teeth to fail to erupt, although the eruption pathway has been cleared by bone resorption.,disease:Defects in PTH1R are the cause of chondrodysplasia Blomstrand type (BOCD) [MIM:215045]. BOCD is a severe skeletal dysplasia.,disease:Defects in PTH1R are the cause of Eiken syndrome [MIM:600002]; also called Eiken skeletal

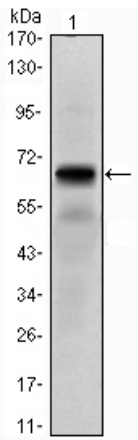
Nanjing BYabscience technology Co.,Ltd



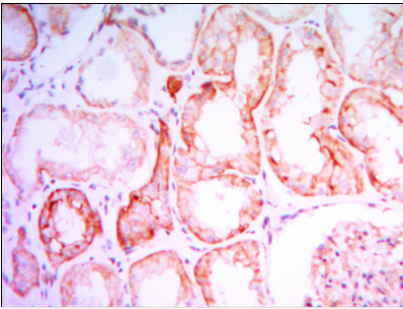
	dysplasia or bone modeling defect of hands and feet. Eiken syndrome is a rare familial autosomal recessive skeletal dysplasia. It is characterized by multiple epiphyseal dysplasia, with extremely retarded ossification, pri
Background	The protein encoded by this gene is a member of the G-protein coupled receptor family 2. This protein is a receptor for parathyroid hormone (PTH) and for parathyroid hormone-like hormone (PTHrP). The activity of this receptor is mediated by G proteins which activate adenylyl cyclase and also a phosphatidylinositol-calcium second messenger system. Defects in this receptor are known to be the cause of Jansen's metaphyseal chondrodysplasia (JMC), chondrodysplasia Blomstrand type (BOCD), as well as enchondromatosis. Two transcript variants encoding the same protein have been found for this gene. [provided by RefSeq, May 2010],
matters needing attention	Avoid repeated freezing and thawing!
Usage suggestions	This product can be used in immunological reaction related experiments. For more information, please consult technical personnel.



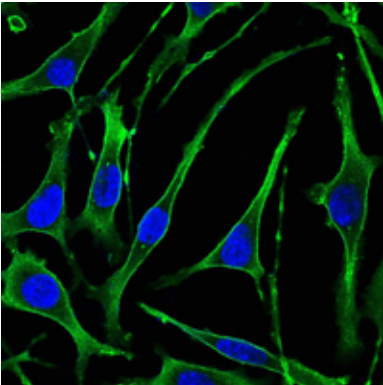
## Products Images



Western Blot analysis using PTH/PTHrP-R Monoclonal Antibody against PTH1R-hlgGfc transfected HEK293 cell lysate.



Immunohistochemistry analysis of paraffin-embedded human kidney tissues with DAB staining using PTH/PTHrP-R Monoclonal Antibody.



Immunofluorescence analysis of SK-BR-3 cells using PTH/PTHrP-R Monoclonal Antibody (green). Blue: DRAQ5 fluorescent DNA dye.

**Nanjing BYabs science technology Co.,Ltd**

网址: [www.njbybio.com](http://www.njbybio.com)

官方热线: 025-5229-8998

监督电话: 15950492658