



# ALS2CR8 Polyclonal Antibody

<b>Catalog No</b>	BYab-12683
<b>Isotype</b>	IgG
<b>Reactivity</b>	Human;Rat;Mouse;
<b>Applications</b>	WB;IHC;IF;ELISA
<b>Gene Name</b>	ALS2CR8
<b>Protein Name</b>	Amyotrophic lateral sclerosis 2 chromosomal region candidate gene 8 protein
<b>Immunogen</b>	The antiserum was produced against synthesized peptide derived from human ALS2CR8. AA range:311-360
<b>Specificity</b>	ALS2CR8 Polyclonal Antibody detects endogenous levels of ALS2CR8 protein.
<b>Formulation</b>	Liquid in PBS containing 50% glycerol, 0.5% BSA and 0.02% sodium azide.
<b>Source</b>	Polyclonal, Rabbit,IgG
<b>Purification</b>	The antibody was affinity-purified from rabbit antiserum by affinity-chromatography using epitope-specific immunogen.
<b>Dilution</b>	WB: 1/500 - 1/2000. IHC: 1/100 - 1/300. ELISA: 1/40000.. IF 1:50-200
<b>Concentration</b>	1 mg/ml
<b>Purity</b>	≥90%
<b>Storage Stability</b>	-20°C/1 year
<b>Synonyms</b>	ALS2CR8; CARF; Amyotrophic lateral sclerosis 2 chromosomal region candidate gene 8 protein; Calcium-response factor; CaRF; Testis development protein NYD-SP24
<b>Observed Band</b>	85kD
<b>Cell Pathway</b>	Nucleus .
<b>Tissue Specificity</b>	Colon,Lymph node,Testis,
<b>Function</b>	function:May be a transcription factor.,
<b>Background</b>	function:May be a transcription factor.,
<b>matters needing attention</b>	Avoid repeated freezing and thawing!

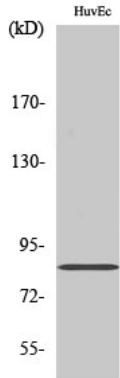
Nanjing BYabscience technology Co.,Ltd



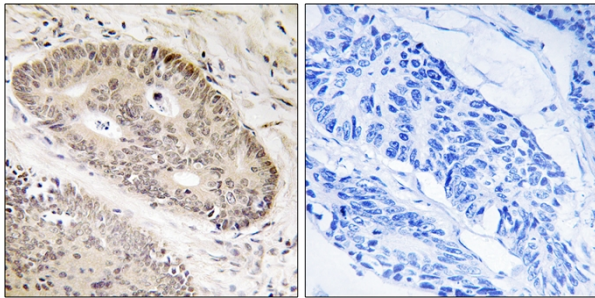
### Usage suggestions

This product can be used in immunological reaction related experiments. For more information, please consult technical personnel.

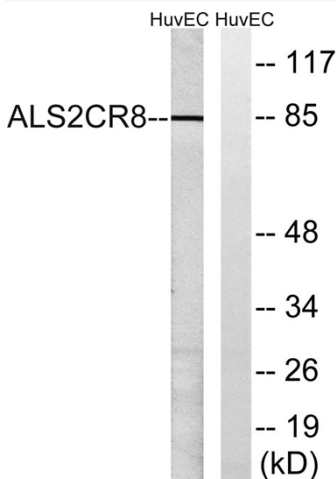
## Products Images



Western Blot analysis of various cells using ALS2CR8 Polyclonal Antibody cells nucleus extracted by Minute TM Cytoplasmic and Nuclear Fractionation kit (SC-003, Inventbiotech, MN, USA).



Immunohistochemistry analysis of paraffin-embedded human lung carcinoma tissue, using ALS2CR8 Antibody. The picture on the right is blocked with the synthesized peptide.



Western blot analysis of lysates from HUVEC cells, using ALS2CR8 Antibody. The lane on the right is blocked with the synthesized peptide.