



ALS2CR4 Polyclonal Antibody

Catalog No	BYab-12681
Isotype	IgG
Reactivity	Human;Mouse
Applications	WB;ELISA
Gene Name	TMEM237
Protein Name	Transmembrane protein 237
Immunogen	The antiserum was produced against synthesized peptide derived from human ALS2CR4. AA range:181-230
Specificity	ALS2CR4 Polyclonal Antibody detects endogenous levels of ALS2CR4 protein.
Formulation	Liquid in PBS containing 50% glycerol, 0.5% BSA and 0.02% sodium azide.
Source	Polyclonal, Rabbit,IgG
Purification	The antibody was affinity-purified from rabbit antiserum by affinity-chromatography using epitope-specific immunogen.
Dilution	Western Blot: 1/500 - 1/2000. ELISA: 1/20000. Not yet tested in other applications.
Concentration	1 mg/ml
Purity	≥90%
Storage Stability	-20°C/1 year
Synonyms	TMEM237; ALS2CR4; Transmembrane protein 237; Amyotrophic lateral sclerosis 2 chromosomal region candidate gene 4 protein
Observed Band	48kD
Cell Pathway	Membrane ; Multi-pass membrane protein . Cell projection, cilium . Localizes at the proximal region of primary cilia were observed, consistent with localization to the transition zone. Anchored to the transition zone by RPGRIP1L.
Tissue Specificity	Brain,Fetal skin,Ovary,
Function	
Background	The protein encoded by this gene is a tetraspanin protein that is thought to be involved in WNT signaling. Defects in this gene are a cause of Joubert syndrome-14. Two transcript variants encoding different isoforms have been found for this gene. [provided by RefSeq, Jan 2012],

Nanjing BYabscience technology Co.,Ltd



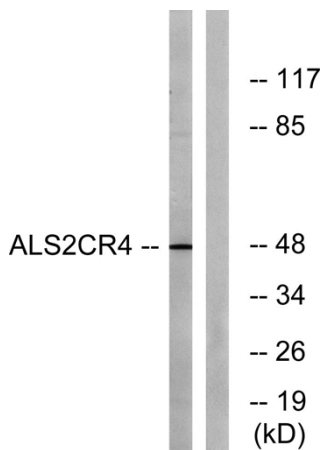
matters needing attention

Avoid repeated freezing and thawing!

Usage suggestions

This product can be used in immunological reaction related experiments. For more information, please consult technical personnel.

Products Images



Western blot analysis of lysates from Jurkat cells, using ALS2CR4 Antibody. The lane on the right is blocked with the synthesized peptide.