



LRRC3 rabbit pAb

Catalog No	BYab-12026
Isotype	IgG
Reactivity	Human; Mouse;Rat
Applications	WB;IHC
Gene Name	LRRC3 C21orf102 LRRC3A UNQ9233/PRO31982
Protein Name	LRRC3
Immunogen	Synthesized peptide derived from human LRRC3 AA range: 110-160
Specificity	This antibody detects endogenous levels of LRRC3 at Human/Mouse/Rat
Formulation	Liquid in PBS containing 50% glycerol, 0.5% BSA and 0.02% sodium azide.
Source	Polyclonal, Rabbit,IgG
Purification	The antibody was affinity-purified from rabbit serum by affinity-chromatography using specific immunogen.
Dilution	WB 1:500-2000;IHC-p 1:50-300
Concentration	1 mg/ml
Purity	≥90%
Storage Stability	-20°C/1 year
Synonyms	
Observed Band	
Cell Pathway	Membrane ; Single-pass membrane protein .
Tissue Specificity	Widely expressed; detected in testis, lung, small intestine, breast, brain, heart, bone marrow, placenta, colon, fetal brain, liver, fetal liver, thymus, salivary gland, spinal cord, spleen, trachea and adrenal gland.
Function	similarity:Belongs to the LRRC3 family.,similarity:Contains 3 LRR (leucine-rich) repeats.,tissue specificity:Widely expressed; detected in testis, lung, small intestine, breast, brain, heart, bone marrow, placenta, colon, fetal brain, liver, fetal liver, thymus, salivary gland, spinal cord, spleen, trachea and adrenal gland.,
Background	
matters needing attention	Avoid repeated freezing and thawing!

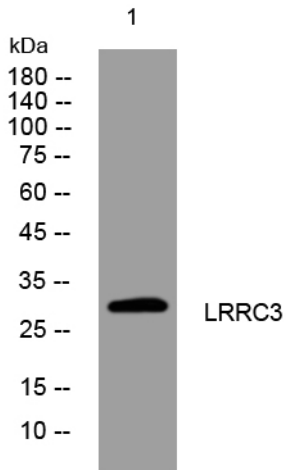
Nanjing BYabscience technology Co.,Ltd



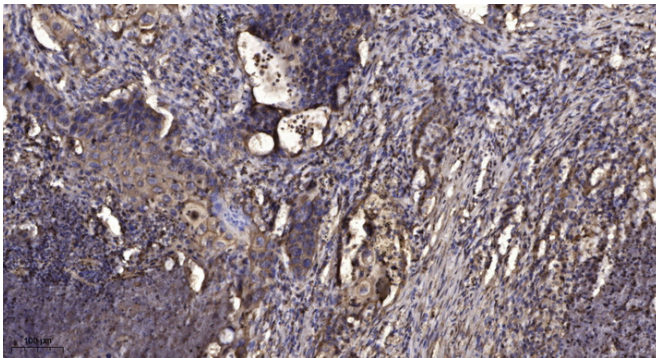
Usage suggestions

This product can be used in immunological reaction related experiments. For more information, please consult technical personnel.

Products Images



Western blot analysis of lysates from SH-SY5Y cells, primary antibody was diluted at 1:1000, 4° over night



Immunohistochemical analysis of paraffin-embedded human Squamous cell carcinoma of lung. 1, Antibody was diluted at 1:200(4° overnight). 2, Tris-EDTA, pH9.0 was used for antigen retrieval. 3, Secondary antibody was diluted at 1:200(room temperature, 45min).