



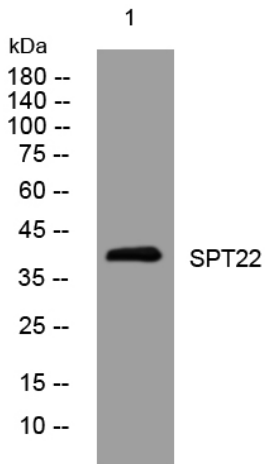
SPT22 rabbit pAb

Catalog No	BYab-11613
Isotype	IgG
Reactivity	Human; Mouse
Applications	WB;IHC
Gene Name	SPATA22
Protein Name	SPT22
Immunogen	Synthesized peptide derived from human SPT22 AA range: 196-246
Specificity	This antibody detects endogenous levels of SPT22 at Human/Mouse
Formulation	Liquid in PBS containing 50% glycerol, 0.5% BSA and 0.02% sodium azide.
Source	Polyclonal, Rabbit,IgG
Purification	The antibody was affinity-purified from rabbit serum by affinity-chromatography using specific immunogen.
Dilution	WB 1:500-2000;IHC-p 1:50-300
Concentration	1 mg/ml
Purity	≥90%
Storage Stability	-20°C/1 year
Synonyms	
Observed Band	
Cell Pathway	Chromosome . Localizes on meiotic chromosome axes. Accumulates on resected DNA. Localization is dependent on MEIOB. .
Tissue Specificity	Highly expressed in adult testis.
Function	tissue specificity:Highly expressed in adult testis.,
Background	
matters needing attention	Avoid repeated freezing and thawing!
Usage suggestions	This product can be used in immunological reaction related experiments. For more information, please consult technical personnel.

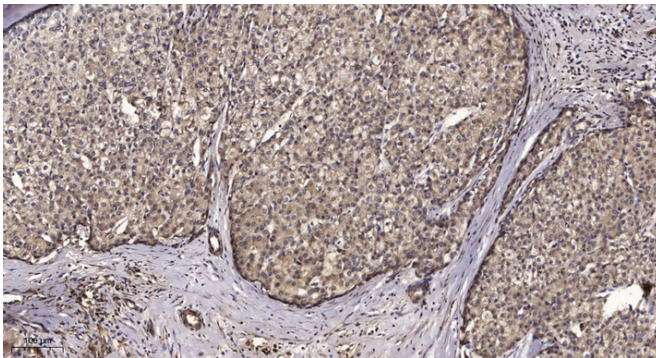
Nanjing BYabscience technology Co.,Ltd



Products Images



Western blot analysis of lysates from U2OS cells, primary antibody was diluted at 1:1000, 4° over night



Immunohistochemical analysis of paraffin-embedded human liver cancer. 1, Antibody was diluted at 1:200(4° overnight). 2, Tris-EDTA,pH9.0 was used for antigen retrieval. 3,Secondary antibody was diluted at 1:200(room temperature, 45min).