



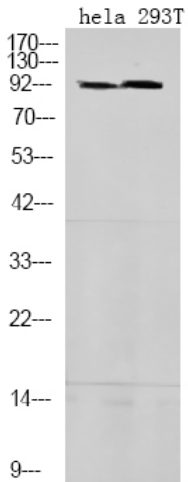
# STAT5A/B (Phospho-Ser725/730) rabbit pAb

<b>Catalog No</b>	BYab-10500
<b>Isotype</b>	IgG
<b>Reactivity</b>	Human; Mouse;Rat
<b>Applications</b>	WB
<b>Gene Name</b>	STAT5A STAT5
<b>Protein Name</b>	STAT5A/B (Phospho-Ser725/730)
<b>Immunogen</b>	Synthesized peptide derived from human STAT5A/B (Phospho-Ser725/730)
<b>Specificity</b>	This antibody detects endogenous levels of STAT5A/B (Phospho-Ser725/730) at Human, Mouse,Rat
<b>Formulation</b>	Liquid in PBS containing 50% glycerol, and 0.156% sodium azide.
<b>Source</b>	Polyclonal, Rabbit,IgG
<b>Purification</b>	The antibody was affinity-purified from rabbit serum by affinity-chromatography using specific immunogen.
<b>Dilution</b>	WB 1:500-2000
<b>Concentration</b>	1 mg/ml
<b>Purity</b>	≥90%
<b>Storage Stability</b>	-20°C/1 year
<b>Synonyms</b>	Signal transducer and activator of transcription 5A
<b>Observed Band</b>	
<b>Cell Pathway</b>	Cytoplasm . Nucleus . Translocated into the nucleus in response to phosphorylation.
<b>Tissue Specificity</b>	Brain,Cervix,Epithelium,Lung,Placenta,Synovial memb
<b>Function</b>	
<b>Background</b>	
<b>matters needing attention</b>	Avoid repeated freezing and thawing!
<b>Usage suggestions</b>	This product can be used in immunological reaction related experiments. For more information, please consult technical personnel.

Nanjing BYabscience technology Co.,Ltd



## Products Images



Western Blot analysis of hela 293T using primary antibody at 1:1000 dilution 4°C, overnight. Secondary antibody(catalog#:RS23920) was diluted at 1:10000 25 °C, 1.5hours