



ALKB7 Polyclonal Antibody

Catalog No	BYab-05197
Isotype	IgG
Reactivity	Human;Mouse
Applications	WB;ELISA
Gene Name	ALKBH7 ABH7 SPATA11 UNQ6002/PRO34564
Protein Name	Probable alpha-ketoglutarate-dependent dioxygenase ABH7 (EC 1.14.11.-) (Alkylated DNA repair protein alkB homolog 7) (Spermatogenesis cell proliferation-related protein) (Spermatogenesis-associated pr
Immunogen	Synthesized peptide derived from human protein . at AA range: 10-90
Specificity	ALKB7 Polyclonal Antibody detects endogenous levels of protein.
Formulation	Liquid in PBS containing 50% glycerol, and 0.02% sodium azide.
Source	Polyclonal, Rabbit,IgG
Purification	The antibody was affinity-purified from rabbit antiserum by affinity-chromatography using epitope-specific immunogen.
Dilution	WB 1:500-2000 ELISA 1:5000-20000
Concentration	1 mg/ml
Purity	≥90%
Storage Stability	-20°C/1 year
Synonyms	
Observed Band	24kD
Cell Pathway	Mitochondrion matrix .
Tissue Specificity	Widely expressed, with highest expression in pancreas, followed by spleen, prostate, ovary and placenta.
Function	similarity:Belongs to the alkB family.,
Background	similarity:Belongs to the alkB family.,
matters needing attention	Avoid repeated freezing and thawing!

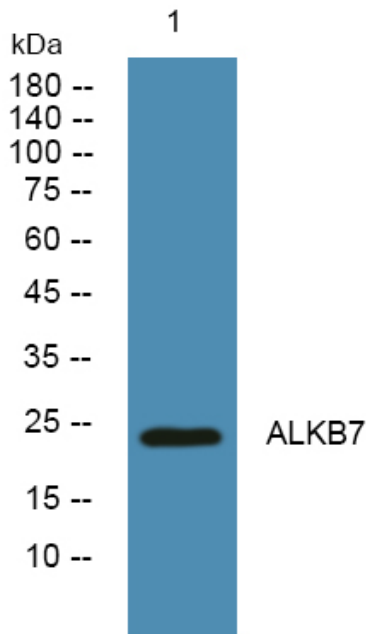
Nanjing BYabscience technology Co.,Ltd



Usage suggestions

This product can be used in immunological reaction related experiments. For more information, please consult technical personnel.

Products Images



Western blot analysis of lysates from A431 cells, primary antibody was diluted at 1:1000, 4° over night