



HO-1 Mouse mAb(Mix-mA)

Catalog No	BYab-04799
Isotype	IgG
Reactivity	Human; Mouse;Rat
Applications	IHC;WB;IF
Gene Name	HMOX1 HO HO1
Protein Name	HO-1
Immunogen	Synthesized peptide derived from human HO-1
Specificity	This antibody detects endogenous levels of HO-1 at Human, Mouse,Rat
Formulation	Liquid in PBS containing 50% glycerol, 0.5% BSA and 0.39% sodium azide.
Source	Monoclonal, Mouse
Purification	The antibody was affinity-purified from mouse ascites by affinity-chromatography using specific immunogen.
Dilution	IF 1:50-200 IHC-p1:50-200 ,WB 1:1000-2000
Concentration	1 mg/ml
Purity	≥90%
Storage Stability	-20°C/1 year
Synonyms	Heme oxygenase 1 (HO-1) (EC 1.14.99.3)
Observed Band	28kD
Cell Pathway	Endoplasmic reticulum membrane ; Single-pass type IV membrane protein ; Cytoplasmic side .
Tissue Specificity	Expressed at higher levels in renal cancer tissue than in normal tissue (at protein level).
Function	catalytic activity:Heme + 3 AH(2) + 3 O(2) = biliverdin + Fe(2+) + CO + 3 A + 3 H(2)O.,function:Heme oxygenase cleaves the heme ring at the alpha methene bridge to form biliverdin. Biliverdin is subsequently converted to bilirubin by biliverdin reductase. Under physiological conditions, the activity of heme oxygenase is highest in the spleen, where senescent erythrocytes are sequestrated and destroyed.,induction:Heme oxygenase 1 activity is highly inducible by its substrate heme and by various non-heme substances such as heavy metals, bromobenzene, endotoxin, oxidizing agents and UVA.,similarity:Belongs to the heme oxygenase family.,
Background	heme oxygenase 1(HMOX1) Homo sapiens Heme oxygenase, an essential enzyme in heme catabolism, cleaves heme to form biliverdin, which is

Nanjing BYabscience technology Co.,Ltd



subsequently converted to bilirubin by biliverdin reductase, and carbon monoxide, a putative neurotransmitter. Heme oxygenase activity is induced by its substrate heme and by various nonheme substances. Heme oxygenase occurs as 2 isozymes, an inducible heme oxygenase-1 and a constitutive heme oxygenase-2. HMOX1 and HMOX2 belong to the heme oxygenase family. [provided by RefSeq, Jul 2008],

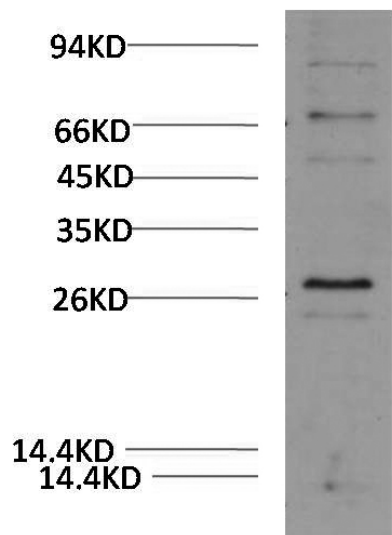
matters needing attention

Avoid repeated freezing and thawing!

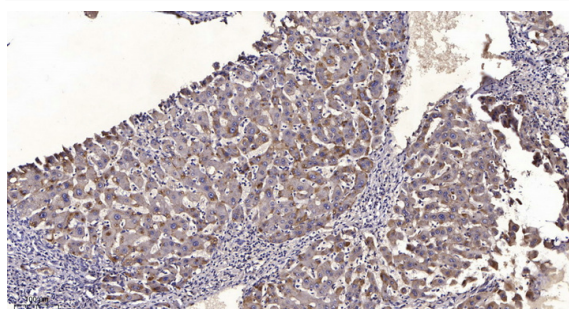
Usage suggestions

This product can be used in immunological reaction related experiments. For more information, please consult technical personnel.

Products Images



Western blot analysis of 3T3 Cell Lysate using HO-1 Mouse Monoclonal mAb diluted at 1:2,000.



Immunohistochemical analysis of paraffin-embedded human liver cancer. 1, Antibody was diluted at 1:200(4° overnight). 2, Tris-EDTA, pH9.0 was used for antigen retrieval. 3, Secondary antibody was diluted at 1:200(room temperature, 45min).

Nanjing BYabs science technology Co.,Ltd

网址: www.njbybio.com

官方热线: 025-5229-8998

监督电话: 15950492658