



Rabbit IgG (Fc specific, Heavy Chain) Monoclonal Antibody(1E1)

Catalog No	BYab-04761
Isotype	IgG
Reactivity	Rabbit
Applications	WB
Gene Name	
Protein Name	
Immunogen	Recombinant Protein of Rabbit IgG (Fc specific, Heavy Chain)
Specificity	The antibody reacts with the Fc portion of rabbit IgG heavy chain but not with the Fab portion of rabbit immunoglobulins. The antibody may cross-react with immunoglobulins from other species.
Formulation	PBS, pH 7.4, containing 0.5%BSA, 0.02% sodium azide as Preservative and 50% Glycerol.
Source	Monoclonal, Mouse
Purification	The antibody was affinity-purified from mouse ascites by affinity-chromatography using specific immunogen.
Dilution	WB: 1:2000-5000
Concentration	1 mg/ml
Purity	≥90%
Storage Stability	-20°C/1 year
Synonyms	
Observed Band	55kD
Cell Pathway	
Tissue Specificity	
Function	
Background	Whole IgG antibodies are isolated as intact molecules from antisera by immunoaffinity chromatography. They have an Fc portion and two antigen binding Fab portions joined together by disulfide bonds and therefore they are divalent. The average molecular weight is reported to be about 160 kDa. The Fc specific, Heavy Chain antibody reacts with the Fc portion of IgG heavy chain but not with

Nanjing BYabscience technology Co.,Ltd



the Fab portion of IgG.

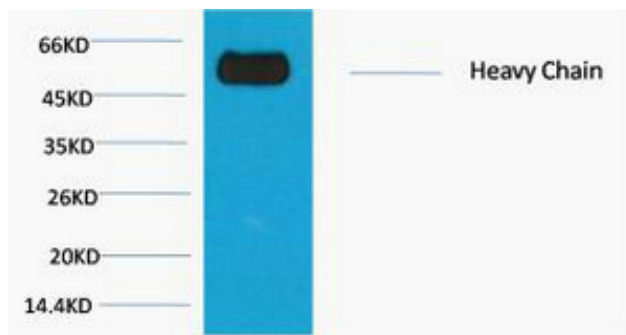
matters needing attention

Avoid repeated freezing and thawing!

Usage suggestions

This product can be used in immunological reaction related experiments. For more information, please consult technical personnel.

Products Images



Western blot analysis of Reduced Rabbit IgG, H+L, diluted at 1:10000.

Nanjing BYabscience technology Co.,Ltd

网址: www.njbybio.com

官方热线: 025-5229-8998

监督电话: 15950492658