



WDR5 Monoclonal Antibody

Catalog No	BYab-03424
Isotype	IgG
Reactivity	Human
Applications	WB;ELISA
Gene Name	WDR5
Protein Name	WD repeat-containing protein 5
Immunogen	Purified recombinant fragment of human WDR5 expressed in E. Coli.
Specificity	WDR5 Monoclonal Antibody detects endogenous levels of WDR5 protein.
Formulation	Ascitic fluid containing 0.03% sodium azide,0.5% BSA, 50%glycerol.
Source	Monoclonal, Mouse
Purification	Affinity purification
Dilution	Western Blot: 1/500 - 1/2000. ELISA: 1/10000. Not yet tested in other applications.
Concentration	1 mg/ml
Purity	≥90%
Storage Stability	-20°C/1 year
Synonyms	WDR5; BIG3; WD repeat-containing protein 5; BMP2-induced 3-kb gene protein
Observed Band	
Cell Pathway	Nucleus .
Tissue Specificity	Epithelium,Lung,Spleen,Uterus,
Function	function:Accelerates osteoblast differentiation.,similarity:Belongs to the WD repeat WDR5/wds family.,similarity:Contains 7 WD repeats.,subunit:Interacts with HCFC1. Component of the SET1 complex, at least composed of the catalytic subunit (SETD1A or SETD1B), WDR5, WDR82, RBBP5, ASH2/ASH2L and CXXC1/CFP1. Component of MLL-containing complexes (named MLL, ASCOM, MLL2/MLL3 or MLL3/MLL4 complex): at least composed ASH2L, RBBP5, DPY30, WDR5, one or several histone methyltransferases (MLL, MLL2, MLL3 and/or MLL4), and the facultative components MEN1, HCFC1, HCFC2, NCOA6, KDM6A, PAXIP1/PTIP and C16orf53/PA1. Component of a multiprotein complex of 900 kDa containing WDR5.,
Background	This gene encodes a member of the WD repeat protein family. WD repeats are minimally conserved regions of approximately 40 amino acids typically bracketed

Nanjing BYabs science technology Co.,Ltd



by gly-his and trp-asn (GH-WD), which may facilitate formation of heterotrimeric or multiprotein complexes. Members of this family are involved in a variety of cellular processes, including cell cycle progression, signal transduction, apoptosis, and gene regulation. This protein contains 7 WD repeats. Alternatively spliced transcript variants encoding the same protein have been identified. [provided by RefSeq, Jul 2008],

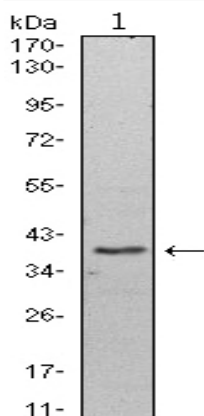
matters needing attention

Avoid repeated freezing and thawing!

Usage suggestions

This product can be used in immunological reaction related experiments. For more information, please consult technical personnel.

Products Images



Western Blot analysis using WDR5 Monoclonal Antibody against HeLa (1) cell lysate.