



Spectrin β V Polyclonal Antibody

| | |
|---------------------------|---|
| Catalog No | BYab-03188 |
| Isotype | IgG |
| Reactivity | Human;Rat;Mouse; |
| Applications | IHC;IF;ELISA |
| Gene Name | SPTBN5 |
| Protein Name | Spectrin beta chain non-erythrocytic 5 |
| Immunogen | The antiserum was produced against synthesized peptide derived from human SPTBN5. AA range:481-530 |
| Specificity | Spectrin β V Polyclonal Antibody detects endogenous levels of Spectrin β V protein. |
| Formulation | Liquid in PBS containing 50% glycerol, 0.5% BSA and 0.02% sodium azide. |
| Source | Polyclonal, Rabbit,IgG |
| Purification | The antibody was affinity-purified from rabbit antiserum by affinity-chromatography using epitope-specific immunogen. |
| Dilution | IHC: 1/100 - 1/300. ELISA: 1/40000.. IF 1:50-200 |
| Concentration | 1 mg/ml |
| Purity | $\geq 90\%$ |
| Storage Stability | -20°C/1 year |
| Synonyms | SPTBN5; BSPECV; HUBSPECV; HUSPECV; Spectrin beta chain; non-erythrocytic 5; Beta-V spectrin |
| Observed Band | |
| Cell Pathway | Cytoplasm, cytoskeleton. Detected prominently in the outer segments of photoreceptor rods and cones and in the basolateral membrane and cytosol of gastric epithelial cells. |
| Tissue Specificity | Expressed at very low levels in many tissues, with strongest expression in cerebellum, spinal cord, stomach, pituitary gland, liver, pancreas, salivary gland, kidney, bladder, and heart. |
| Function | similarity:Belongs to the spectrin family.,similarity:Contains 1 PH domain.,similarity:Contains 2 CH (calponin-homology) domains.,similarity:Contains 31 spectrin repeats.,subcellular location:Detected prominently in the outer segments of photoreceptor rods and cones and in the basolateral membrane and cytosol of gastric epithelial cells.,subunit:Probably associates with an alpha chain.,tissue specificity:Expressed at very low levels in many tissues, with strongest expression in cerebellum, spinal cord, stomach, pituitary gland, liver, pancreas, salivary gland, kidney, bladder, and heart., |

Nanjing BYabscience technology Co.,Ltd



Background

similarity:Belongs to the spectrin family.,similarity:Contains 1 PH domain.,similarity:Contains 2 CH (calponin-homology) domains.,similarity:Contains 31 spectrin repeats.,subcellular location:Detected prominently in the outer segments of photoreceptor rods and cones and in the basolateral membrane and cytosol of gastric epithelial cells.,subunit:Probably associates with an alpha chain.,tissue specificity:Expressed at very low levels in many tissues, with strongest expression in cerebellum, spinal cord, stomach, pituitary gland, liver, pancreas, salivary gland, kidney, bladder, and heart.,

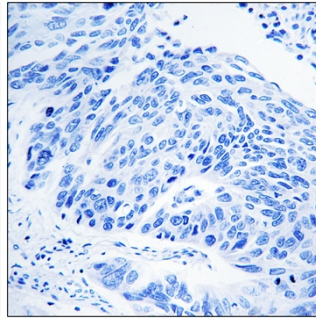
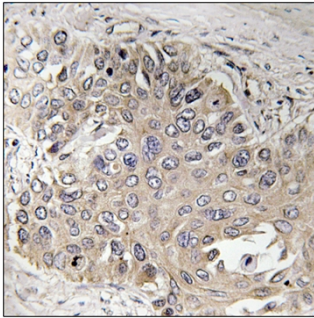
matters needing attention

Avoid repeated freezing and thawing!

Usage suggestions

This product can be used in immunological reaction related experiments. For more information, please consult technical personnel.

Products Images



Immunohistochemistry analysis of paraffin-embedded human lung carcinoma, using SPTBN5 Antibody. The picture on the right is blocked with the synthesized peptide.