



Cytokeratin 15 Monoclonal Antibody

Catalog No	BYab-02918
Isotype	IgG
Reactivity	Human
Applications	WB;IHC;IF;FCM;ELISA
Gene Name	KRT15
Protein Name	Keratin type I cytoskeletal 15
Immunogen	Purified recombinant fragment of Cytokeratin 15 expressed in E. Coli.
Specificity	Cytokeratin 15 Monoclonal Antibody detects endogenous levels of Cytokeratin 15 protein.
Formulation	Ascitic fluid containing 0.03% sodium azide,0.5% BSA, 50%glycerol.
Source	Monoclonal, Mouse
Purification	Affinity purification
Dilution	Western Blot: 1/500 - 1/2000. Immunohistochemistry: 1/200 - 1/1000. Immunofluorescence: 1/200 - 1/1000. Flow cytometry: 1/200 - 1/400. ELISA: 1/10000. Not yet tested in other applications.
Concentration	1 mg/ml
Purity	≥90%
Storage Stability	-20°C/1 year
Synonyms	KRT15; KRTB; Keratin; type I cytoskeletal 15; Cytokeratin-15; CK-15; Keratin-15; K15
Observed Band	
Cell Pathway	nucleus,intermediate filament,extracellular exosome,
Tissue Specificity	Expressed in a discontinuous manner in the basal cell layer of adult skin epidermis, but continuously in the basal layer of fetal skin epidermis and nail. Also expressed in the outer root sheath above the hair bulb in hair follicle (at protein level). Expressed homogeneously in all cell layers of the esophagus and exocervix, but detected in the basal cell layer only of oral mucosa, skin and in the basal plus the next two layers of the suprabasal epithelium of the palate.
Function	miscellaneous:There are two types of cytoskeletal and microfibrillar keratin: I (acidic; 40-55 kDa) and II (neutral to basic; 56-70 kDa).,similarity:Belongs to the intermediate filament family.,subunit:Heterotetramer of two type I and two type II keratins.,tissue specificity:Expressed in a discontinuous manner in the basal cell layer of adult skin epidermis, but continuously in the basal layer of fetal skin epidermis and nail. Also expressed in the outer root sheath above the hair bulb in

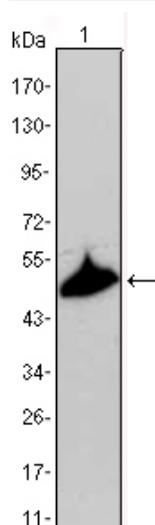
Nanjing BYabs science technology Co.,Ltd



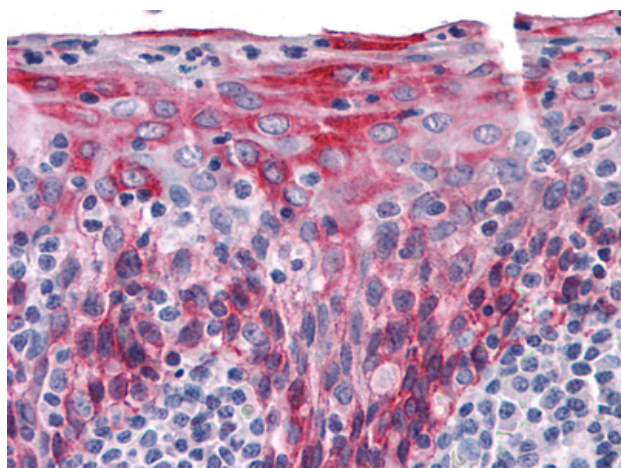
	hair follicle (at protein level). Expressed homogeneously in all cell layers of the esophagus and exocervix, but detected in the basal cell layer only of oral mucosa, skin and in the basal plus the next two layers of the suprabasal epithelium of the palate.,
Background	The protein encoded by this gene is a member of the keratin gene family. The keratins are intermediate filament proteins responsible for the structural integrity of epithelial cells and are subdivided into cytokeratins and hair keratins. Most of the type I cytokeratins consist of acidic proteins which are arranged in pairs of heterotypic keratin chains and are clustered in a region on chromosome 17q21.2. [provided by RefSeq, Jul 2008],
matters needing attention	Avoid repeated freezing and thawing!
Usage suggestions	This product can be used in immunological reaction related experiments. For more information, please consult technical personnel.



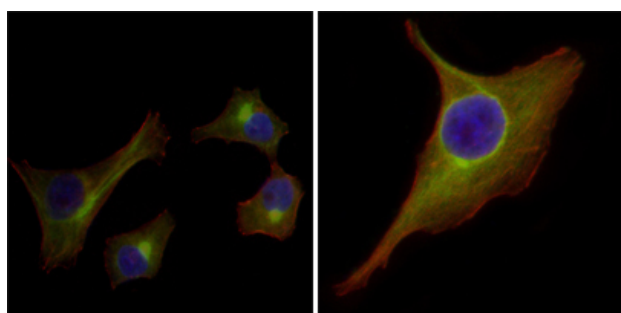
Products Images



Western Blot analysis using Cytokeratin 15 Monoclonal Antibody against A431 cell lysate.



Immunohistochemistry analysis of paraffin-embedded human Tonsil tissues with AEC staining using Cytokeratin 15 Monoclonal Antibody.



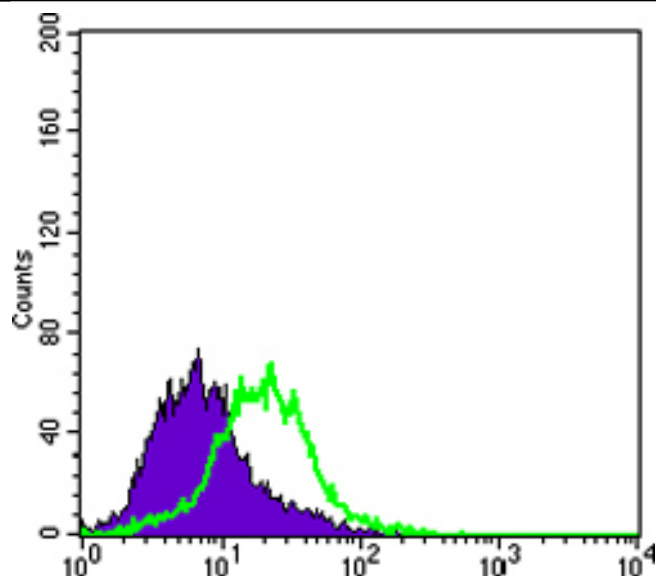
Immunofluorescence analysis of HepG2(left) and PACN-1 (right) cells using Cytokeratin 15 Monoclonal Antibody (green). Red: Actin filaments have been labeled with DY-554 phalloidin. Blue: DRAQ5 fluorescent DNA dye.

Nanjing BYabscience technology Co.,Ltd

网址: www.njbybio.com

官方热线: 025-5229-8998

监督电话: 15950492658



Flow cytometric analysis of PACN-1 cells using Cytokeratin 15 Monoclonal Antibody (green) and negative control (purple).