



# PGA5 Monoclonal Antibody

<b>Catalog No</b>	BYab-02338
<b>Isotype</b>	IgG
<b>Reactivity</b>	Human
<b>Applications</b>	WB;IHC;IF;ELISA
<b>Gene Name</b>	PGA3/PGA4/PGA5
<b>Protein Name</b>	Pepsin A
<b>Immunogen</b>	Purified recombinant fragment of human PGA5 expressed in E. Coli.
<b>Specificity</b>	PGA5 Monoclonal Antibody detects endogenous levels of PGA5 protein.
<b>Formulation</b>	Ascitic fluid containing 0.03% sodium azide,0.5% BSA, 50%glycerol.
<b>Source</b>	Monoclonal, Mouse
<b>Purification</b>	Affinity purification
<b>Dilution</b>	WB: 1/500 - 1/2000. IHC: 1/200 - 1/1000. ELISA: 1/10000.. IF 1:50-200
<b>Concentration</b>	1 mg/ml
<b>Purity</b>	≥90%
<b>Storage Stability</b>	-20°C/1 year
<b>Synonyms</b>	
<b>Observed Band</b>	
<b>Cell Pathway</b>	extracellular exosome,multivesicular body lumen,
<b>Tissue Specificity</b>	Brain,Colon,Kidney,Placenta,Skeletal muscle,
<b>Function</b>	catalytic activity:Preferential cleavage: hydrophobic, preferably aromatic, residues in P1 and P1' positions. Cleaves 1-Phe- -Val-2, 4-Gln- -His-5, 13-Glu- -Ala-14, 14-Ala- -Leu-15, 15-Leu- -Tyr-16, 16-Tyr- -Leu-17, 23-Gly- -Phe-24, 24-Phe- -Phe-25 and 25-Phe- -Tyr-26 bonds in the B chain of insulin.,function:Shows particularly broad specificity; although bonds involving phenylalanine and leucine are preferred, many others are also cleaved to some extent.,similarity:Belongs to the peptidase A1 family.,
<b>Background</b>	This gene encodes a protein precursor of the digestive enzyme pepsin, a member of the peptidase A1 family of endopeptidases. The encoded precursor is secreted by gastric chief cells and undergoes autocatalytic cleavage in acidic conditions to form the active enzyme, which functions in the digestion of dietary proteins. This gene is found in a cluster of related genes on chromosome 11, each

**Nanjing BYabscience technology Co.,Ltd**



of which encodes one of multiple pepsinogens. Pepsinogen levels in serum may serve as a biomarker for atrophic gastritis and gastric cancer. [provided by RefSeq, Jul 2015],

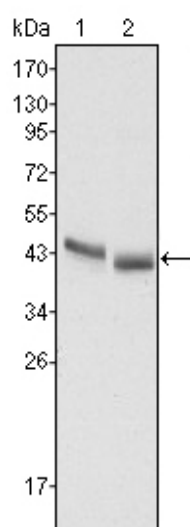
#### matters needing attention

Avoid repeated freezing and thawing!

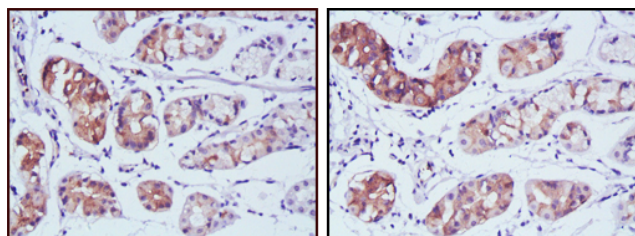
#### Usage suggestions

This product can be used in immunological reaction related experiments. For more information, please consult technical personnel.

## Products Images



Western Blot analysis using PGA5 Monoclonal Antibody against HepG2 (1) and SMMC-7721 (2) cell lysate.



Immunohistochemistry analysis of paraffin-embedded human stomach cancer tissues with DAB staining using PGA5 Monoclonal Antibody.

**Nanjing BYabs science technology Co.,Ltd**

网址: [www.njbybio.com](http://www.njbybio.com)

官方热线: 025-5229-8998

监督电话: 15950492658