



MN1 Polyclonal Antibody

Catalog No	BYab-01873
Isotype	IgG
Reactivity	Human;Rat;Mouse;
Applications	WB;ELISA;IHC
Gene Name	MN1
Protein Name	Probable tumor suppressor protein MN1
Immunogen	The antiserum was produced against synthesized peptide derived from human MN1. AA range:821-870
Specificity	MN1 Polyclonal Antibody detects endogenous levels of MN1 protein.
Formulation	Liquid in PBS containing 50% glycerol, 0.5% BSA and 0.02% sodium azide.
Source	Polyclonal, Rabbit,IgG
Purification	The antibody was affinity-purified from rabbit antiserum by affinity-chromatography using epitope-specific immunogen.
Dilution	WB 1:500-2000;IHC-p 1:50-300; ELISA 2000-20000
Concentration	1 mg/ml
Purity	≥90%
Storage Stability	-20°C/1 year
Synonyms	MN1; Probable tumor suppressor protein MN1
Observed Band	135kD
Cell Pathway	Nucleus .
Tissue Specificity	Widely expressed in fetal and adult tissues. Highest expression is observed in fetal brain and skeletal muscle, and adult skeletal muscle.
Function	disease:A chromosomal aberration involving MN1 may be a cause of acute myeloid leukemia (AML). Translocation t(12;22)(p13;q11) with TEL.,disease:Defects in MN1 may be a cause of meningiomas, slowly growing benign tumors derived from the arachnoidal cap cells of the leptomeninges, the soft coverings of the brain and spinal cord. Meningiomas are believed to be the most common primary tumors of the central nervous system in man.,function:May play a role in tumor suppression.,tissue specificity:Ubiquitously expressed. Highest levels in skeletal muscle.,
Background	Meningioma 1 (MN1) contains two sets of CAG repeats. It is disrupted by a balanced translocation (4;22) in a meningioma, and its inactivation may contribute

Nanjing BYabscience technology Co.,Ltd



to meningioma 32 pathogenesis. [provided by RefSeq, Jul 2008],

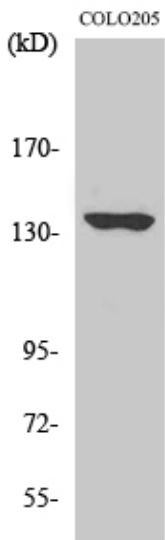
matters needing attention

Avoid repeated freezing and thawing!

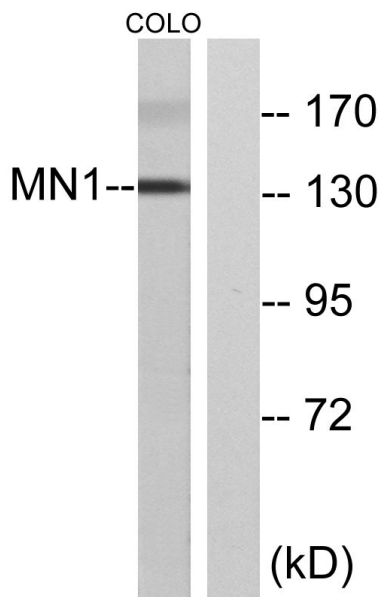
Usage suggestions

This product can be used in immunological reaction related experiments. For more information, please consult technical personnel.

Products Images

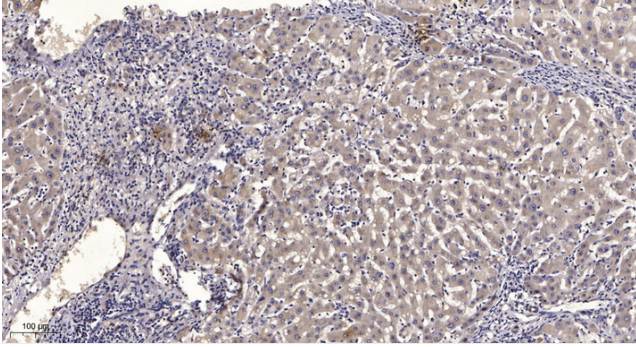


Western Blot analysis of various cells using MN1 Polyclonal Antibody diluted at 1:2000



Western blot analysis of lysates from COLO cells, using MN1 Antibody. The lane on the right is blocked with the synthesized peptide.

Nanjing BYabscience technology Co.,Ltd



Immunohistochemical analysis of paraffin-embedded human liver cancer. 1, Antibody was diluted at 1:200(4° overnight). 2, Tris-EDTA,pH9.0 was used for antigen retrieval. 3,Secondary antibody was diluted at 1:200(room temperature, 45min).