



Chk2 (Phospho Ser379) mouse mAb

Catalog No	BYmab-17652
Isotype	IgG
Reactivity	Human, Mouse
Applications	WB
Gene Name	CHEK2 CDS1 CHK2 RAD53
Protein Name	Serine/threonine-protein kinase Chk2 (EC 2.7.11.1) (CHK2 checkpoint homolog) (Cds1 homolog) (Hucds1) (hCds1) (Checkpoint kinase 2)
Immunogen	Synthesized peptide derived from human Chk2 (Phospho Ser379)
Specificity	This antibody detects endogenous levels of Chk2 (Phospho Ser379) Mouse mAb at Human, Mouse
Formulation	Liquid in PBS containing 50% glycerol, and 0.02% sodium azide.
Source	Mouse, Monoclonal
Purification	The antibody was affinity-purified from mouse antiserum by affinity-chromatography using epitope-specific immunogen.
Dilution	WB 1:500-2000
Concentration	1 mg/ml
Purity	≥90%
Storage Stability	-20°C/1 year
Synonyms	Serine/threonine-protein kinase Chk2 (EC 2.7.11.1) (CHK2 checkpoint homolog) (Cds1 homolog) (Hucds1) (hCds1) (Checkpoint kinase 2)
Observed Band	61kD
Cell Pathway	[Isoform 2]: Nucleus. Isoform 10 is present throughout the cell.; [Isoform 4]: Nucleus.; [Isoform 7]: Nucleus.; [Isoform 9]: Nucleus.; [Isoform 12]: Nucleus.; Nucleus, PML body. Nucleus, nucleoplasm. Recruited into PML bodies together with TP53.
Tissue Specificity	High expression is found in testis, spleen, colon and peripheral blood leukocytes. Low expression is found in other tissues.
Function	catalytic activity:ATP + a protein = ADP + a phosphoprotein.; cofactor:Magnesium.; disease:Defects in CHEK2 are associated with Li-Fraumeni syndrome 2 (LFS2) [MIM:609265]; a highly penetrant familial cancer phenotype usually associated with inherited mutations in p53/TP53.; disease:Defects in CHEK2 are found in some patients with osteosarcoma (OSRC) [MIM:259500].; disease:Defects in CHEK2 are found in some patients with prostate cancer (CaP) [MIM:176807].; enzyme regulation:Rapidly phosphorylated on Thr-68 by MLTK in response to DNA

Nanjing BYabscience technology Co.,Ltd



damage and to replication block. Kinase activity is also up-regulated by autophosphorylation.,function:Regulates cell cycle checkpoints and apoptosis in response to DNA damage, particularly to DNA double-strand breaks. Inhibits CDC25C phosphatase by phosphorylation on 'Ser-216', preventing the entry into mitosis. May also play a role in meiosis. Regulates the TP53

Background

checkpoint kinase 2(CHEK2) Homo sapiens In response to DNA damage and replication blocks, cell cycle progression is halted through the control of critical cell cycle regulators. The protein encoded by this gene is a cell cycle checkpoint regulator and putative tumor suppressor. It contains a forkhead-associated protein interaction domain essential for activation in response to DNA damage and is rapidly phosphorylated in response to replication blocks and DNA damage. When activated, the encoded protein is known to inhibit CDC25C phosphatase, preventing entry into mitosis, and has been shown to stabilize the tumor suppressor protein p53, leading to cell cycle arrest in G1. In addition, this protein interacts with and phosphorylates BRCA1, allowing BRCA1 to restore survival after DNA damage. Mutations in this gene have been linked with Li-Fraumeni syndrome, a highly penetrant familial cancer phenotype usually associated with inherited mutati

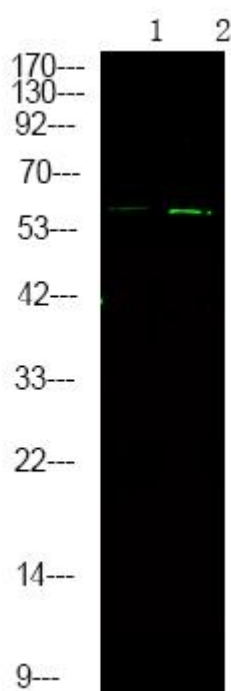
matters needing attention

Avoid repeated freezing and thawing!

Usage suggestions

This product can be used in immunological reaction related experiments. For more information, please consult technical personnel.

Products Images



Western Blot analysis of various cells using Chk2
(Phospho Ser379) mouse mAb

Nanjing BYabscience technology Co.,Ltd