



Bcl-6 (Phospho Ser343) mouse mAb

Catalog No	BYmab-17154
Isotype	IgG
Reactivity	Human, Mouse
Applications	WB
Gene Name	BCL6 BCL5 LAZ3 ZBTB27 ZNF51
Protein Name	B-cell lymphoma 6 protein (BCL-6) (B-cell lymphoma 5 protein) (BCL-5) (Protein LAZ-3) (Zinc finger and BTB domain-containing protein 27) (Zinc finger protein 51)
Immunogen	Synthesized peptide derived from human Bcl-6 (Phospho Ser343)
Specificity	This antibody detects endogenous levels of Bcl-6 (Phospho Ser343) Mouse mAb at Human, Mouse
Formulation	Liquid in PBS containing 50% glycerol, and 0.02% sodium azide.
Source	Mouse, Monoclonal
Purification	The antibody was affinity-purified from mouse antiserum by affinity-chromatography using epitope-specific immunogen.
Dilution	WB 1:500-2000
Concentration	1 mg/ml
Purity	≥90%
Storage Stability	-20°C/1 year
Synonyms	B-cell lymphoma 6 protein (BCL-6) (B-cell lymphoma 5 protein) (BCL-5) (Protein LAZ-3) (Zinc finger and BTB domain-containing protein 27) (Zinc finger protein 51)
Observed Band	80kD
Cell Pathway	Nucleus .
Tissue Specificity	Expressed in germinal center T- and B-cells and in primary immature dendritic cells.
Function	disease:A chromosomal aberration involving BCL6 may be a cause of a form of B-cell leukemia. Translocation t(3;11)(q27;q23) with POU2AF1/OBF1.,disease:A chromosomal aberration involving BCL6 may be a cause of lymphoma. Translocation t(3;4)(q27;p11) with ARHH/TTF.,disease:Chromosomal aberrations involving BCL6 may be a cause of B-cell non-Hodgkin lymphoma. Translocation t(3;14)(q27;q32); translocation t(3;22)(q27;q11) with immunoglobulin gene regions.,function:Transcriptional repressor which is required for germinal center formation and antibody affinity maturation. Probably plays an important role in

Nanjing BYabscience technology Co.,Ltd



lymphomagenesis.,induction:Down-regulated during maturation of dendritic cells by selective stimuli such as LPS, CD40L and zymosan.,PTM:Phosphorylated by MAPK1 in response to antigen receptor activation. Phosphorylation induces its degradation by ubiquitin/proteasome pathway.,similarity:Cont

Background

B-cell CLL/lymphoma 6(BCL6) Homo sapiens The protein encoded by this gene is a zinc finger transcription factor and contains an N-terminal POZ domain. This protein acts as a sequence-specific repressor of transcription, and has been shown to modulate the transcription of STAT-dependent IL-4 responses of B cells. This protein can interact with a variety of POZ-containing proteins that function as transcription corepressors. This gene is found to be frequently translocated and hypermutated in diffuse large-cell lymphoma (DLCL), and may be involved in the pathogenesis of DLCL. Alternatively spliced transcript variants encoding different protein isoforms have been found for this gene. [provided by RefSeq, Aug 2015],

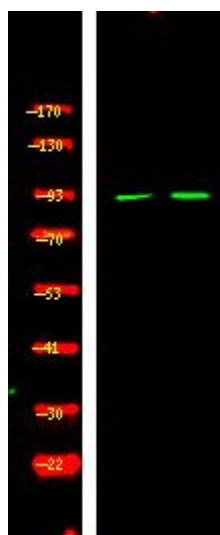
matters needing attention

Avoid repeated freezing and thawing!

Usage suggestions

This product can be used in immunological reaction related experiments. For more information, please consult technical personnel.

Products Images



Western Blot analysis of various cells using Bcl-6 (Phospho Ser343) mouse mAb