



# Vitronectin Monoclonal Antibody

<b>Catalog No</b>	BYmab-17108
<b>Isotype</b>	IgG
<b>Reactivity</b>	Human;Rat;Mouse;
<b>Applications</b>	WB
<b>Gene Name</b>	VTN
<b>Protein Name</b>	Vitronectin
<b>Immunogen</b>	The antiserum was produced against synthesized peptide derived from the Internal region of human VTN. AA range:50-100
<b>Specificity</b>	Vitronectin Monoclonal Antibody detects endogenous levels of Vitronectin protein.
<b>Formulation</b>	Liquid in PBS containing 50% glycerol, 0.5% BSA and 0.02% sodium azide.
<b>Source</b>	Monoclonal, Mouse,IgG
<b>Purification</b>	The antibody was affinity-purified from mouse antiserum by affinity-chromatography using epitope-specific immunogen.
<b>Dilution</b>	WB 1:500-2000
<b>Concentration</b>	1 mg/ml
<b>Purity</b>	≥90%
<b>Storage Stability</b>	-20°C/1 year
<b>Synonyms</b>	VTN; Vitronectin; VN; S-protein; Serum-spreading factor; V75
<b>Observed Band</b>	55kD
<b>Cell Pathway</b>	Secreted, extracellular space .; Parasitophorous vacuole . (Microbial infection) In P.falciparum-infected red blood cells, VTN internalization is detected at the early trophozoite stage (PubMed:29567995). Colocalizes with SERA5 at the schizont stage and with SERA5 P47 at the merozoite surface (PubMed:29567995). .
<b>Tissue Specificity</b>	Expressed in the retina pigment epithelium (at protein level) (PubMed:25136834). Expressed in plasma (at protein level) (PubMed:2448300). Expressed in serum (at protein level) (PubMed:29567995).
<b>Function</b>	domain:The SMB domain mediates interaction with SERPINE1/PAI1. The heparin-binding domain mediates interaction with insulin.,function:Somatomedin-B is a growth hormone-dependent serum factor with protease-inhibiting activity.,function:Vitronectin is a cell adhesion and spreading factor found in serum and tissues. Vitronectin interact with glycosaminoglycans and proteoglycans. Is recognized by certain members of the integrin family and serves as a cell-to-substrate adhesion molecule. Inhibitor of the membrane-damaging effect of the terminal cytolytic complement

**Nanjing BYabscience technology Co.,Ltd**



pathway.,PTM:It has been suggested that the active SMB domain may be permitted considerable disulfide bond heterogeneity or variability, thus two alternate disulfide patterns based on 3D structures are described with 1 disulfide bond conserved in both.,PTM:N- and O-glycosylated.,PTM:Phosphorylation on Thr-69 and Thr-76 favors cell

## Background

The protein encoded by this gene is a member of the pexin family. It is found in serum and tissues and promotes cell adhesion and spreading, inhibits the membrane-damaging effect of the terminal cytolytic complement pathway, and binds to several serpin serine protease inhibitors. It is a secreted protein and exists in either a single chain form or a clipped, two chain form held together by a disulfide bond. [provided by RefSeq, Jul 2008],

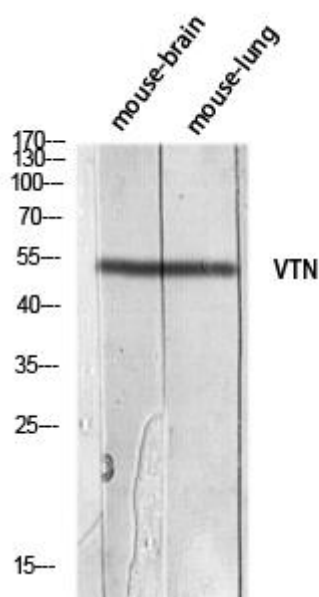
## matters needing attention

Avoid repeated freezing and thawing!

## Usage suggestions

This product can be used in immunological reaction related experiments. For more information, please consult technical personnel.

## Products Images



Western Blot analysis of various cells using Vitronectin Monoclonal Antibody