



Talin-1 Monoclonal Antibody

Catalog No	BYmab-17095
Isotype	IgG
Reactivity	Human;Mouse;Rat
Applications	WB
Gene Name	TLN1
Protein Name	Talin-1
Immunogen	The antiserum was produced against synthesized peptide derived from the C-terminal region of human TLN1. AA range:2471-2520
Specificity	Talin-1 Monoclonal Antibody detects endogenous levels of Talin-1 protein.
Formulation	Liquid in PBS containing 50% glycerol, 0.5% BSA and 0.02% sodium azide.
Source	Monoclonal, Mouse,IgG
Purification	The antibody was affinity-purified from mouse antiserum by affinity-chromatography using epitope-specific immunogen.
Dilution	WB 1:500-2000
Concentration	1 mg/ml
Purity	≥90%
Storage Stability	-20°C/1 year
Synonyms	TLN1; KIAA1027; TLN; Talin-1
Observed Band	269kD
Cell Pathway	Cell projection, ruffle membrane ; Peripheral membrane protein ; Cytoplasmic side . Cytoplasm, cytoskeleton . Cell surface . Cell junction, focal adhesion . Colocalizes with LAYN at the membrane ruffles. Localized preferentially in focal adhesions than fibrillar adhesions (By similarity). .
Tissue Specificity	Aorta,Brain,Embryonic carcinoma,Platelet,
Function	function:Probably involved in connections of major cytoskeletal structures to the plasma membrane. High molecular weight cytoskeletal protein concentrated at regions of cell-substratum contact and, in lymphocytes, at cell-cell contacts.,similarity:Contains 1 FERM domain.,similarity:Contains 1 I/LWEQ domain.,subcellular location:Colocalizes with LAYN at the membrane ruffles.,subunit:Binds with high affinity to vinculin and with low affinity to integrins. Interacts with PIP5K1C and NRAP. Interacts with LAYN. Interacts with SYNM.,

Nanjing BYabscience technology Co.,Ltd



Background

This gene encodes a cytoskeletal protein that is concentrated in areas of cell-substratum and cell-cell contacts. The encoded protein plays a significant role in the assembly of actin filaments and in spreading and migration of various cell types, including fibroblasts and osteoclasts. It codistributes with integrins in the cell surface membrane in order to assist in the attachment of adherent cells to extracellular matrices and of lymphocytes to other cells. The N-terminus of this protein contains elements for localization to cell-extracellular matrix junctions. The C-terminus contains binding sites for proteins such as beta-1-integrin, actin, and vinculin. [provided by RefSeq, Feb 2009],

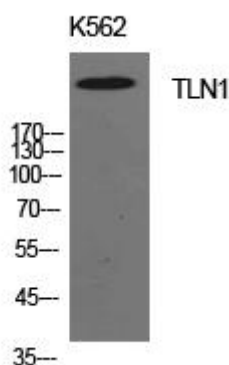
matters needing attention

Avoid repeated freezing and thawing!

Usage suggestions

This product can be used in immunological reaction related experiments. For more information, please consult technical personnel.

Products Images



Western Blot analysis of various cells using Talin-1 Monoclonal Antibody