



Integrin α D Monoclonal Antibody

Catalog No	BYmab-17090
Isotype	IgG
Reactivity	Human;Rat;Mouse;
Applications	WB
Gene Name	ITGAD
Protein Name	Integrin alpha-D
Immunogen	The antiserum was produced against synthesized peptide derived from the Internal region of human ITGAD. AA range:901-950
Specificity	Integrin α D Monoclonal Antibody detects endogenous levels of Integrin α D protein.
Formulation	Liquid in PBS containing 50% glycerol, 0.5% BSA and 0.02% sodium azide.
Source	Monoclonal, Mouse,IgG
Purification	The antibody was affinity-purified from mouse antiserum by affinity-chromatography using epitope-specific immunogen.
Dilution	WB 1:500-2000
Concentration	1 mg/ml
Purity	$\geq 90\%$
Storage Stability	-20°C/1 year
Synonyms	ITGAD; Integrin alpha-D; ADB2; CD11 antigen-like family member D; Leukointegrin alpha D; CD11d
Observed Band	127kD
Cell Pathway	Membrane; Single-pass type I membrane protein.
Tissue Specificity	Expressed moderately on myelomonocytic cell lines and subsets of peripheral blood leukocytes and strongly on tissue-specialized cells, including macrophages foam cells within atherosclerotic plaques, and on splenic red pulp macrophages.
Function	domain:The integrin I-domain (insert) is a VWFA domain. Integrins with I-domains do not undergo protease cleavage.,function:Integrin alpha-D/beta-2 is a receptor for ICAM3 and VCAM1. May play a role in the atherosclerotic process such as clearing lipoproteins from plaques and in phagocytosis of blood-borne pathogens, particulate matter, and senescent erythrocytes from the blood.,similarity:Belongs to the integrin alpha chain family.,similarity:Contains 1 VWFA domain.,similarity:Contains 7 FG-GAP repeats.,subunit:Heterodimer of an alpha and a beta subunit. Alpha-D associates with beta-2.,tissue specificity:Expressed moderately on myelomonocytic cell lines and subsets of peripheral blood

Nanjing BYabscience technology Co.,Ltd



leukocytes and strongly on tissue-specialized cells, including macrophages foam cells within atherosclerotic plaques, and on splenic red pulp macrophages.,

Background

integrin subunit alpha D(ITGAD) Homo sapiens This gene belongs to the beta-2 integrin family of membrane glycoproteins, which are composed of non-covalently linked alpha and beta subunits to form a heterodimer. It encodes the alpha subunit of the cell surface heterodimers and is involved in the activation and adhesion functions of leukocytes. The gene is located about 11kb downstream of the integrin subunit alpha X gene, another member of the integrin family. It is expressed in the tissue and circulating myeloid leukocytes. Alternative splicing results in multiple transcript variants. [provided by RefSeq, Dec 2015],

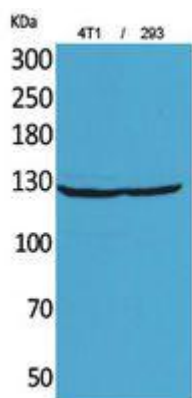
matters needing attention

Avoid repeated freezing and thawing!

Usage suggestions

This product can be used in immunological reaction related experiments. For more information, please consult technical personnel.

Products Images



Western Blot analysis of various cells using Integrin α D Monoclonal Antibody