



Nectin 3 Monoclonal Antibody

Catalog No	BYmab-17085
Isotype	IgG
Reactivity	Human;Mouse;Rat
Applications	WB
Gene Name	PVRL3
Protein Name	Poliovirus receptor-related protein 3
Immunogen	The antiserum was produced against synthesized peptide derived from the Internal region of human PVRL3. AA range:311-360
Specificity	Nectin 3 Monoclonal Antibody detects endogenous levels of Nectin 3 protein.
Formulation	Liquid in PBS containing 50% glycerol, 0.5% BSA and 0.02% sodium azide.
Source	Monoclonal, Mouse,IgG
Purification	The antibody was affinity-purified from mouse antiserum by affinity-chromatography using epitope-specific immunogen.
Dilution	WB 1:500-2000
Concentration	1 mg/ml
Purity	≥90%
Storage Stability	-20°C/1 year
Synonyms	PVRL3; PRR3; Poliovirus receptor-related protein 3; CDw113; Nectin-3; CD113
Observed Band	60kD
Cell Pathway	Cell membrane ; Single-pass membrane protein . Cell junction, synapse, postsynaptic cell membrane .
Tissue Specificity	Predominantly expressed in testis and placenta as well as in many cell lines, including epithelial cell lines.
Function	function:Plays a role in cell-cell adhesion through heterophilic trans-interactions with nectin-like proteins or nectins, such as trans-interaction with PVRL2/nectin-2 at Sertoli-spermatid junctions. Trans-interaction with PVR induces activation of CDC42 and RAC small G proteins through common signaling molecules such as SRC and RAP1. Also involved in the formation of cell-cell junctions, including adherens junctions and synapses. Induces endocytosis-mediated down-regulation of PVR from the cell surface, resulting in reduction of cell movement and proliferation. Plays a role in the morphology of the ciliary body.,similarity:Belongs to the nectin family.,similarity:Contains 1 Ig-like V-type (immunoglobulin-like) domain.,similarity:Contains 2 Ig-like C2-type (immunoglobulin-like) domains.,subunit:Cis- and trans-homodimer. Can form

Nanjing BYabscience technology Co.,Ltd



trans-heterodimers with PVRL1/nectin-1, PVRL2/nectin-2, PVR

Background

This gene encodes a member of the nectin family of proteins, which function as adhesion molecules at adherens junctions. This family member interacts with other nectin-like proteins and with afadin, a filamentous actin-binding protein involved in the regulation of directional motility, cell proliferation and survival. This gene plays a role in ocular development involving the ciliary body. Mutations in this gene are believed to result in congenital ocular defects. Alternative splicing results in multiple transcript variants. [provided by RefSeq, Aug 2011],

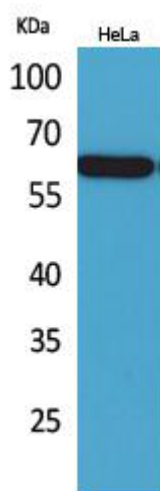
matters needing attention

Avoid repeated freezing and thawing!

Usage suggestions

This product can be used in immunological reaction related experiments. For more information, please consult technical personnel.

Products Images



Western Blot analysis of various cells using Nectin 3 Monoclonal Antibody

Nanjing BYabs science technology Co.,Ltd