



TSLC1 Monoclonal Antibody

Catalog No	BYmab-17074
Isotype	IgG
Reactivity	Human;Mouse
Applications	WB
Gene Name	CADM1
Protein Name	Cell adhesion molecule 1
Immunogen	The antiserum was produced against synthesized peptide derived from human CADM1. AA range:393-442
Specificity	TSLC1 Monoclonal Antibody detects endogenous levels of TSLC1 protein.
Formulation	Liquid in PBS containing 50% glycerol, 0.5% BSA and 0.02% sodium azide.
Source	Monoclonal, Mouse,IgG
Purification	The antibody was affinity-purified from mouse antiserum by affinity-chromatography using epitope-specific immunogen.
Dilution	WB 1:500-2000
Concentration	1 mg/ml
Purity	≥90%
Storage Stability	-20°C/1 year
Synonyms	CADM1; IGSF4; IGSF4A; NECL2; SYNCAM; TSLC1; Cell adhesion molecule 1; Immunoglobulin superfamily member 4; IgSF4; Nectin-like protein 2; NECL-2; Spermatogenic immunoglobulin superfamily; SgIgSF; Synaptic cell adhesion molecule; SynCAM; Tumo
Observed Band	49kD
Cell Pathway	Cell membrane ; Single-pass type I membrane protein . Cell junction, synapse . Localized to the basolateral plasma membrane of epithelial cells in gall bladder. .
Tissue Specificity	Embryo,Human retina,Liver,Lung,Plasma,
Function	disease:Absent or down-regulated in many advanced cases of NSCLC as well as in many other human cancers, due to gene silencing by promoter methylation.,domain:The cytoplasmic domain appears to play a critical role in proapoptosis and tumor suppressor activity in NSCLC.,function:Mediates homophilic cell-cell adhesion in a Ca(2+)-independent manner. Also mediates heterophilic cell-cell adhesion with CADM3 and PVRL3 in a Ca(2+)-independent manner. Acts as a tumor suppressor in non-small-cell lung cancer (NSCLC) cells.

Nanjing BYabscience technology Co.,Ltd



Background

Interaction with CRTAM promotes natural killer (NK) cell cytotoxicity and interferon-gamma (IFN-gamma) secretion by CD8+ cells in vitro as well as NK cell-mediated rejection of tumors expressing CADM3 in vivo. May contribute to the less invasive phenotypes of lepidic growth tumor cells. In mast cells, may mediate attachment to and promote communication with nerves. CADM1, together with MITF, is essential for development and survival of mast cells in vivo. May act as a synaptic cell adhesion molecule that drives synapse assembly. May be involved in neuronal migration, axon growth, pathfinding, and fasciculation on the axons of differentiating neurons. May play diverse roles in the spermatogenesis including in the adhesion of spermatocytes and spermatids to Sertoli cells and for their normal differentiation into mature spermatozoa. similarity: Belongs to the nectin family. similarity: Contains 1 Ig-like V-type (immunoglobulin-like) domain. similarity: Contains 2 Ig-like C2-type (immunoglobulin-like) domains. subcellular location: Associates with perinuclear and plasma membranes in vivo. Localized to the basolateral plasma membrane of epithelial cells in gall bladder. subunit: Homodimer. Interacts with CRTAM and EPB41L3/DAL1. The interaction with EPB41L3/DAL1 may act to anchor CADM1 to the actin cytoskeleton. Interacts via its C-terminus with the PDZ domain of MPP3 and the PDZ domain of MPP6.

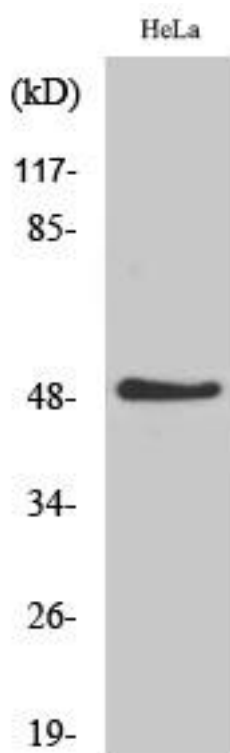
matters needing attention

Avoid repeated freezing and thawing!

Usage suggestions

This product can be used in immunological reaction related experiments. For more information, please consult technical personnel.

Products Images



Western Blot analysis of various cells using TSLC1 Monoclonal Antibody

bscience technology Co.,Ltd

网

热线: 025-5229-8998

监督电话: 15950492658