



Plakophilin 2 Monoclonal Antibody

Catalog No	BYmab-17066
Isotype	IgG
Reactivity	Human;Rat
Applications	WB
Gene Name	PKP2
Protein Name	Plakophilin-2
Immunogen	The antiserum was produced against synthesized peptide derived from human PKP2. AA range:632-681
Specificity	Plakophilin 2 Monoclonal Antibody detects endogenous levels of Plakophilin 2 protein.
Formulation	Liquid in PBS containing 50% glycerol, 0.5% BSA and 0.02% sodium azide.
Source	Monoclonal, Mouse,IgG
Purification	The antibody was affinity-purified from mouse antiserum by affinity-chromatography using epitope-specific immunogen.
Dilution	WB 1:500-2000
Concentration	1 mg/ml
Purity	≥90%
Storage Stability	-20°C/1 year
Synonyms	PKP2; Plakophilin-2
Observed Band	97kD
Cell Pathway	Nucleus . Cell junction, desmosome . Nuclear and associated with desmosomes.
Tissue Specificity	Detected in heart right ventricle (at protein level). Widely expressed. Found at desmosomal plaques in simple and stratified epithelia and in non-epithelial tissues such as myocardium and lymph node follicles. In most stratified epithelia found in the desmosomes of the basal cell layer and seems to be absent from suprabasal strata.
Function	disease:Defects in PKP2 are the cause of familial arrhythmogenic right ventricular dysplasia 9 (ARVD9) [MIM:609040]; also known as arrhythmogenic right ventricular cardiomyopathy 9 (ARVC9). ARVD is an autosomal dominant disease characterized by partial degeneration of the myocardium of the right ventricle, electrical instability, and sudden death. It is clinically defined by electrocardiographic and angiographic criteria; pathologic findings, replacement of ventricular myocardium with fatty and fibrous elements, preferentially involve the right ventricular free wall.,function:May play a role in junctional

Nanjing BYabscience technology Co.,Ltd



plaques.,PTM:Phosphorylated upon DNA damage, probably by ATM or ATR.,similarity:Belongs to the beta-catenin family.,similarity:Contains 8 ARM repeats.,subcellular location:Nuclear and associated with desmosomes.,tissue specificity:Widely expressed. Found at desmosomal plaques in simple

Background

This gene encodes a member of the arm-repeat (armadillo) and plakophilin gene families. Plakophilin proteins contain numerous armadillo repeats, localize to cell desmosomes and nuclei, and participate in linking cadherins to intermediate filaments in the cytoskeleton. This gene product may regulate the signaling activity of beta-catenin. Two alternately spliced transcripts encoding two protein isoforms have been identified. A processed pseudogene with high similarity to this locus has been mapped to chromosome 12p13. [provided by RefSeq, Jul 2008],

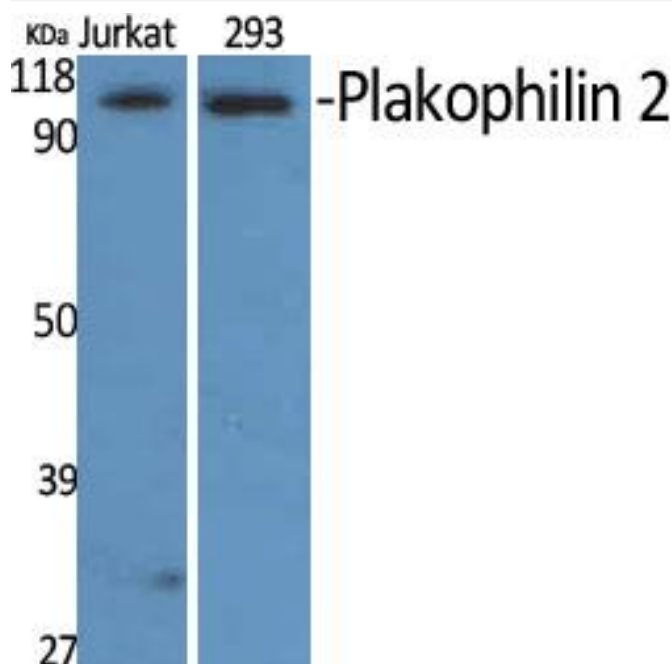
matters needing attention

Avoid repeated freezing and thawing!

Usage suggestions

This product can be used in immunological reaction related experiments. For more information, please consult technical personnel.

Products Images



Western Blot analysis of various cells using Plakophilin 2 Monoclonal Antibody