



# Mindin Monoclonal Antibody

Catalog No	BYmab-17049
Isotype	IgG
Reactivity	Human;Mouse;Rat;Monkey
Applications	WB
Gene Name	SPON2
Protein Name	Spondin-2
Immunogen	The antiserum was produced against synthesized peptide derived from human SPON2. AA range:71-120
Specificity	Mindin Monoclonal Antibody detects endogenous levels of Mindin protein.
Formulation	Liquid in PBS containing 50% glycerol, 0.5% BSA and 0.02% sodium azide.
Source	Monoclonal, Mouse,IgG
Purification	The antibody was affinity-purified from mouse antiserum by affinity-chromatography using epitope-specific immunogen.
Dilution	WB 1:500-2000
Concentration	1 mg/ml
Purity	≥90%
Storage Stability	-20°C/1 year
Synonyms	SPON2; DIL1; Spondin-2; Differentially expressed in cancerous and non-cancerous lung cells 1; DIL-1; Mindin
Observed Band	37kD
Cell Pathway	Secreted, extracellular space, extracellular matrix .
Tissue Specificity	Expressed in normal lung tissue but not in lung carcinoma cell lines.
Function	function:Cell adhesion protein that promote adhesion and outgrowth of hippocampal embryonic neurons. Binds directly to bacteria and their components and functions as an opsonin for macrophage phagocytosis of bacteria. Essential in the initiation of the innate immune response and represents a unique pattern-recognition molecule in the ECM for microbial pathogens.,similarity:Contains 1 spondin domain.,similarity:Contains 1 TSP type-1 domain.,tissue specificity:Expressed in normal lung tissues but not in lung carcinoma cell lines.,

Nanjing BYabscience technology Co.,Ltd

网址: [www.njbybio.com](http://www.njbybio.com)

官方热线: 025-5229-8998

监督电话: 15950492658



## Background

function:Cell adhesion protein that promote adhesion and outgrowth of hippocampal embryonic neurons. Binds directly to bacteria and their components and functions as an opsonin for macrophage phagocytosis of bacteria. Essential in the initiation of the innate immune response and represents a unique pattern-recognition molecule in the ECM for microbial pathogens.,similarity:Contains 1 spondin domain.,similarity:Contains 1 TSP type-1 domain.,tissue specificity:Expressed in normal lung tissues but not in lung carcinoma cell lines.,

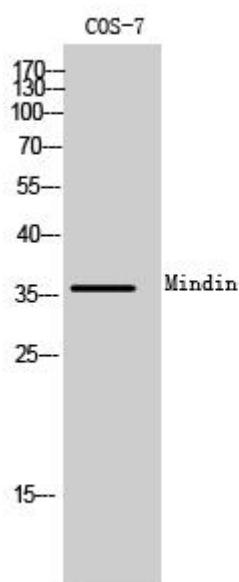
## matters needing attention

Avoid repeated freezing and thawing!

## Usage suggestions

This product can be used in immunological reaction related experiments. For more information, please consult technical personnel.

## Products Images



Western Blot analysis of various cells using Mindin Monoclonal Antibody