



Integrin β 5 Monoclonal Antibody

Catalog No	BYmab-17035
Isotype	IgG
Reactivity	Human;Mouse;Rat;Monkey
Applications	WB
Gene Name	ITGB5
Protein Name	Integrin beta-5
Immunogen	The antiserum was produced against synthesized peptide derived from human Integrin beta5. AA range:721-770
Specificity	Integrin β 5 Monoclonal Antibody detects endogenous levels of Integrin β 5 protein.
Formulation	Liquid in PBS containing 50% glycerol, 0.5% BSA and 0.02% sodium azide.
Source	Monoclonal, Mouse,IgG
Purification	The antibody was affinity-purified from mouse antiserum by affinity-chromatography using epitope-specific immunogen.
Dilution	WB 1:500-2000
Concentration	1 mg/ml
Purity	$\geq 90\%$
Storage Stability	-20°C/1 year
Synonyms	ITGB5; Integrin beta-5
Observed Band	88kD
Cell Pathway	Membrane; Single-pass type I membrane protein.
Tissue Specificity	Brain,Kidney,Thymic epithelium,
Function	function:Integrin alpha-V/beta-5 is a receptor for fibronectin. It recognizes the sequence R-G-D in its ligand.,similarity:Belongs to the integrin beta chain family.,similarity:Contains 1 PSI domain.,similarity:Contains 1 VWFA domain.,subunit:Heterodimer of an alpha and a beta subunit. Beta-5 associates with alpha-V.,
Background	function:Integrin alpha-V/beta-5 is a receptor for fibronectin. It recognizes the sequence R-G-D in its ligand.,similarity:Belongs to the integrin beta chain family.,similarity:Contains 1 PSI domain.,similarity:Contains 1 VWFA domain.,subunit:Heterodimer of an alpha and a beta subunit. Beta-5 associates with alpha-V.,

Nanjing BYabscience technology Co.,Ltd



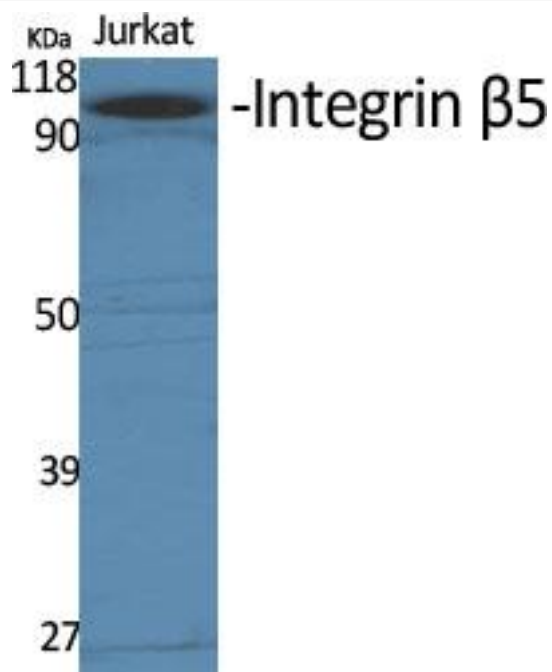
matters needing attention

Avoid repeated freezing and thawing!

Usage suggestions

This product can be used in immunological reaction related experiments. For more information, please consult technical personnel.

Products Images



Western Blot analysis of various cells using Integrin β 5 Monoclonal Antibody