



Fibulin-2 Monoclonal Antibody

Catalog No	BYmab-17020
Isotype	IgG
Reactivity	Human;Rat;Mouse;
Applications	WB
Gene Name	FBLN2
Protein Name	Fibulin-2
Immunogen	The antiserum was produced against synthesized peptide derived from human FBLN2. AA range:241-290
Specificity	Fibulin-2 Monoclonal Antibody detects endogenous levels of Fibulin-2 protein.
Formulation	Liquid in PBS containing 50% glycerol, 0.5% BSA and 0.02% sodium azide.
Source	Monoclonal, Mouse,IgG
Purification	The antibody was affinity-purified from mouse antiserum by affinity-chromatography using epitope-specific immunogen.
Dilution	WB 1:500-2000
Concentration	1 mg/ml
Purity	≥90%
Storage Stability	-20°C/1 year
Synonyms	FBLN2; Fibulin-2; FIBL-2
Observed Band	130kD
Cell Pathway	Secreted, extracellular space, extracellular matrix.
Tissue Specificity	Component of both basement membranes and other connective tissues. Expressed in heart, placenta and ovary.
Function	developmental stage:Widely expressed during embryonic development. Primarily detected within the neuroepithelium, spinal ganglia and peripheral nerves.,function:Its binding to fibronectin and some other ligands is calcium dependent.,similarity:Belongs to the fibulin family.,similarity:Contains 11 EGF-like domains.,similarity:Contains 3 anaphylatoxin-like domains.,subunit:Homotrimer; disulfide-linked. Interacts with LAMA2.,tissue specificity:Component of both basement membranes and other connective tissues. Expressed in heart, placenta and ovary.,
Background	This gene encodes an extracellular matrix protein, which belongs to the fibulin family. This protein binds various extracellular ligands and calcium. It may play a

Nanjing BYabscience technology Co.,Ltd



role during organ development, in particular, during the differentiation of heart, skeletal and neuronal structures. Alternatively spliced transcript variants encoding different isoforms have been identified. [provided by RefSeq, Jul 2008],

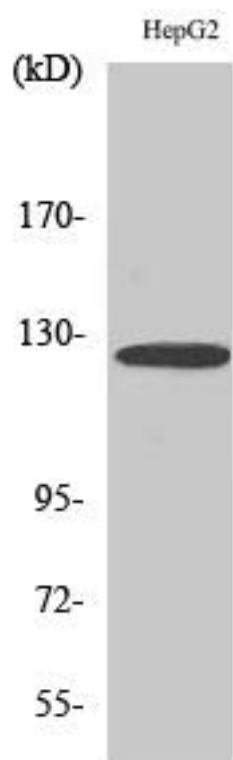
matters needing attention

Avoid repeated freezing and thawing!

Usage suggestions

This product can be used in immunological reaction related experiments. For more information, please consult technical personnel.

Products Images



Western Blot analysis of various cells using Fibulin-2 Monoclonal Antibody