



# Dsg2 Monoclonal Antibody

<b>Catalog No</b>	BYmab-17016
<b>Isotype</b>	IgG
<b>Reactivity</b>	Human;Rat;Mouse;
<b>Applications</b>	WB
<b>Gene Name</b>	DSG2
<b>Protein Name</b>	Desmoglein-2
<b>Immunogen</b>	The antiserum was produced against synthesized peptide derived from human DSG2. AA range:401-450
<b>Specificity</b>	Dsg2 Monoclonal Antibody detects endogenous levels of Dsg2 protein.
<b>Formulation</b>	Liquid in PBS containing 50% glycerol, 0.5% BSA and 0.02% sodium azide.
<b>Source</b>	Monoclonal, Mouse,IgG
<b>Purification</b>	The antibody was affinity-purified from mouse antiserum by affinity-chromatography using epitope-specific immunogen.
<b>Dilution</b>	WB 1:500-2000
<b>Concentration</b>	1 mg/ml
<b>Purity</b>	≥90%
<b>Storage Stability</b>	-20°C/1 year
<b>Synonyms</b>	DSG2; CDHF5; Desmoglein-2; Cadherin family member 5; HDGC
<b>Observed Band</b>	140kD
<b>Cell Pathway</b>	Cell membrane ; Single-pass type I membrane protein. Cell junction, desmosome.
<b>Tissue Specificity</b>	All of the tissues tested and carcinomas.
<b>Function</b>	disease:Defects in DSG2 are the cause of familial arrhythmogenic right ventricular dysplasia 10 (ARVD10) [MIM:610193]; also known as arrhythmogenic right ventricular cardiomyopathy 10 (ARVC10). ARVD is an autosomal dominant disease characterized by partial degeneration of the myocardium of the right ventricle, electrical instability, and sudden death. It is clinically defined by electrocardiographic and angiographic criteria; pathologic findings, replacement of ventricular myocardium with fatty and fibrous elements, preferentially involve the right ventricular free wall.,domain:Calcium may be bound by the cadherin-like repeats .,function:Component of intercellular desmosome junctions. Involved in the interaction of plaque proteins and intermediate filaments mediating cell-cell adhesion.,similarity:Contains 4 cadherin domains.,tissue specificity:All of the

**Nanjing BYabscience technology Co.,Ltd**



tissues tested and carcinomas.,

## Background

This gene encodes a member of the desmoglein family and cadherin cell adhesion molecule superfamily of proteins. Desmogleins are calcium-binding transmembrane glycoprotein components of desmosomes, cell-cell junctions between epithelial, myocardial, and other cell types. The encoded preproprotein is proteolytically processed to generate the mature glycoprotein. This gene is present in a gene cluster with other desmoglein gene family members on chromosome 18. Mutations in this gene have been associated with arrhythmogenic right ventricular dysplasia, familial, 10. [provided by RefSeq, Jan 2016],

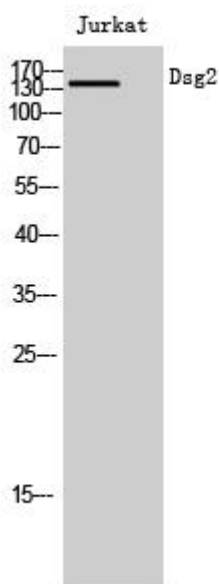
## matters needing attention

Avoid repeated freezing and thawing!

## Usage suggestions

This product can be used in immunological reaction related experiments. For more information, please consult technical personnel.

## Products Images



Western Blot analysis of various cells using Dsg2 Monoclonal Antibody

**Nanjing BYabscience technology Co.,Ltd**

网址: [www.njbybio.com](http://www.njbybio.com)

官方热线: 025-5229-8998

监督电话: 15950492658