



# Contactin 2 Monoclonal Antibody

<b>Catalog No</b>	BYmab-17010
<b>Isotype</b>	IgG
<b>Reactivity</b>	Human;Mouse;Rat
<b>Applications</b>	WB
<b>Gene Name</b>	CNTN2
<b>Protein Name</b>	Contactin-2
<b>Immunogen</b>	The antiserum was produced against synthesized peptide derived from human CNTN2. AA range:111-160
<b>Specificity</b>	Contactin 2 Monoclonal Antibody detects endogenous levels of Contactin 2 protein.
<b>Formulation</b>	Liquid in PBS containing 50% glycerol, 0.5% BSA and 0.02% sodium azide.
<b>Source</b>	Monoclonal, Mouse,IgG
<b>Purification</b>	The antibody was affinity-purified from mouse antiserum by affinity-chromatography using epitope-specific immunogen.
<b>Dilution</b>	WB 1:500-2000
<b>Concentration</b>	1 mg/ml
<b>Purity</b>	≥90%
<b>Storage Stability</b>	-20°C/1 year
<b>Synonyms</b>	CNTN2; AXT; TAG1; TAX1; Contactin-2; Axonal glycoprotein TAG-1; Axonin-1; Transient axonal glycoprotein 1; TAX-1
<b>Observed Band</b>	120kD
<b>Cell Pathway</b>	Cell membrane; Lipid-anchor, GPI-anchor. Attached to the neuronal membrane by a GPI-anchor and is also released from neurons.
<b>Tissue Specificity</b>	Amygdala,Brain,Placenta,Plasma,
<b>Function</b>	function:May play a role in the initial growth and guidance of axons. May be involved in cell adhesion.,similarity:Belongs to the immunoglobulin superfamily. Contactin family.,similarity:Contains 4 fibronectin type-III domains.,similarity:Contains 6 Ig-like C2-type (immunoglobulin-like) domains.,subcellular location:Attached to the neuronal membrane by a GPI-anchor and is also released from neurons.,
<b>Background</b>	This gene encodes a member of the contactin family of proteins, part of the immunoglobulin superfamily of cell adhesion molecules. The encoded glycosylphosphatidylinositol (GPI)-anchored neuronal membrane protein plays a

**Nanjing BYabscience technology Co.,Ltd**



role in the proliferation, migration, and axon guidance of neurons of the developing cerebellum. A mutation in this gene may be associated with adult myoclonic epilepsy. [provided by RefSeq, Sep 2016],

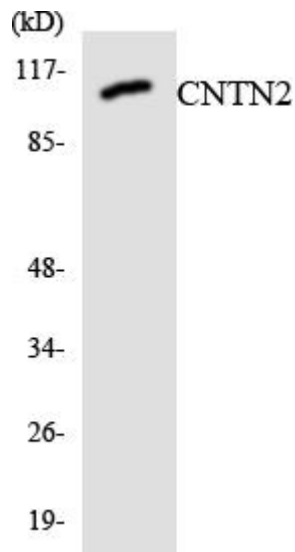
**matters needing attention**

Avoid repeated freezing and thawing!

**Usage suggestions**

This product can be used in immunological reaction related experiments. For more information, please consult technical personnel.

## Products Images



Western Blot analysis of various cells using Contactin 2 Monoclonal Antibody