



CLP36 Monoclonal Antibody

Catalog No	BYmab-16966
Isotype	IgG
Reactivity	Human;Mouse;Rat
Applications	WB
Gene Name	PDLIM1
Protein Name	PDZ and LIM domain protein 1
Immunogen	The antiserum was produced against synthesized peptide derived from human PDLIM1. AA range:61-110
Specificity	CLP36 Monoclonal Antibody detects endogenous levels of CLP36 protein.
Formulation	Liquid in PBS containing 50% glycerol, 0.5% BSA and 0.02% sodium azide.
Source	Monoclonal, Mouse,IgG
Purification	The antibody was affinity-purified from mouse antiserum by affinity-chromatography using epitope-specific immunogen.
Dilution	WB 1:500-2000
Concentration	1 mg/ml
Purity	≥90%
Storage Stability	-20°C/1 year
Synonyms	PDLIM1; CLIM1; CLP36; PDZ and LIM domain protein 1; C-terminal LIM domain protein 1; Elfin; LIM domain protein CLP-36
Observed Band	36kD
Cell Pathway	Cytoplasm . Cytoplasm, cytoskeleton . Cytoplasm, myofibril, sarcomere, Z line . Associates with actin stress fibers. .
Tissue Specificity	Strongly expressed in the heart and skeletal muscle, moderately expressed in the spleen, small intestine, colon, placenta, and lung. A lower level expression is seen in liver, thymus, kidney, prostate and pancreas and is not found in the brain, testis, ovary, and peripheral blood leukocytes.
Function	function:Cytoskeletal protein that may act as an adapter that brings other proteins (like kinases) to the cytoskeleton.,similarity:Contains 1 LIM zinc-binding domain.,similarity:Contains 1 PDZ (DHR) domain.,subcellular location:Associates with the actin stress fibers.,subunit:Interacts with alpha-actinins 1, 2 and 4.,tissue specificity:Strongly expressed in the heart and skeletal muscle, moderately expressed in the spleen, small intestine, colon, placenta, and lung. A lower level expression is seen in liver, thymus, kidney, prostate and pancreas and is not found in the brain, testis, ovary, and peripheral blood leukocytes.,

Nanjing BYabscience technology Co.,Ltd



Background

This gene encodes a member of the enigma protein family. The protein contains two protein interacting domains, a PDZ domain at the amino terminal end and one to three LIM domains at the carboxyl terminal. It is a cytoplasmic protein associated with the cytoskeleton. The protein may function as an adapter to bring other LIM-interacting proteins to the cytoskeleton. Pseudogenes associated with this gene are located on chromosomes 3, 14 and 17. [provided by RefSeq, Oct 2012],

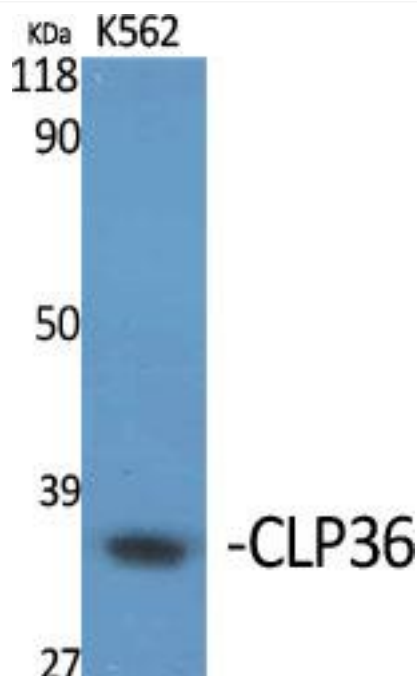
matters needing attention

Avoid repeated freezing and thawing!

Usage suggestions

This product can be used in immunological reaction related experiments. For more information, please consult technical personnel.

Products Images



Western Blot analysis of various cells using CLP36 Monoclonal Antibody