



# Claudin-2 Monoclonal Antibody

|                           |  |
|---------------------------|--|
| <b>Catalog No</b>         | BYmab-16956  |
| <b>Isotype</b>            | IgG  |
| <b>Reactivity</b>         | Human;Mouse  |
| <b>Applications</b>       | WB   |
| <b>Gene Name</b>          | CLDN2  |
| <b>Protein Name</b>       | Claudin-2  |
| <b>Immunogen</b>          | The antiserum was produced against synthesized peptide derived from human Claudin 2. AA range:181-230  |
| <b>Specificity</b>        | Claudin-2 Monoclonal Antibody detects endogenous levels of Claudin-2 protein.  |
| <b>Formulation</b>        | Liquid in PBS containing 50% glycerol, 0.5% BSA and 0.02% sodium azide.  |
| <b>Source</b>             | Monoclonal, Mouse,IgG  |
| <b>Purification</b>       | The antibody was affinity-purified from mouse antiserum by affinity-chromatography using epitope-specific immunogen.   |
| <b>Dilution</b>           | WB 1:500-2000  |
| <b>Concentration</b>      | 1 mg/ml  |
| <b>Purity</b>             | ≥90%   |
| <b>Storage Stability</b>  | -20°C/1 year   |
| <b>Synonyms</b>           | CLDN2; PSEC0059; SP82; Claudin-2; SP82   |
| <b>Observed Band</b>      | 25kD   |
| <b>Cell Pathway</b>       | Cell junction, tight junction . Cell membrane ; Multi-pass membrane protein .  |
| <b>Tissue Specificity</b> | Colon,Colon epithelium,Kidney,Skin,Teratocarcinoma,Thalamus,   |
| <b>Function</b>           | function:Plays a major role in tight junction-specific obliteration of the intercellular space, through calcium-independent cell-adhesion activity .,similarity:Belongs to the claudin family .,subunit:Can form homo- and heteropolymers with other CLDN. Homopolymers interact with CLDN3, but not CLDN1, homopolymers. Directly interacts with TJP1/ZO-1, TJP2/ZO-2 and TJP3/ZO-3.,                           |
| <b>Background</b>         | This gene product belongs to the claudin protein family whose members have been identified as major integral membrane proteins localized exclusively at tight junctions. Claudins are expressed in an organ-specific manner and regulate tissue-specific physiologic properties of tight junctions. This protein is expressed in the intestine. Alternatively spliced transcript variants with different 5&apos; |

**Nanjing BYabscience technology Co.,Ltd**



untranslated region have been found for this gene.[provided by RefSeq, Jan 2010],

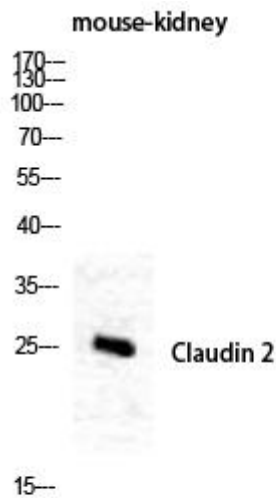
**matters needing attention**

Avoid repeated freezing and thawing!

**Usage suggestions**

This product can be used in immunological reaction related experiments. For more information, please consult technical personnel.

## Products Images



Western Blot analysis of various cells using Claudin-2 Monoclonal Antibody