



Claudin-1 Monoclonal Antibody

Catalog No	BYmab-16951
Isotype	IgG
Reactivity	Human;Mouse;Rat
Applications	WB
Gene Name	CLDN1
Protein Name	Claudin-1
Immunogen	The antiserum was produced against synthesized peptide derived from human Claudin 1. AA range:162-211
Specificity	Claudin-1 Monoclonal Antibody detects endogenous levels of Claudin-1 protein.
Formulation	Liquid in PBS containing 50% glycerol, 0.5% BSA and 0.02% sodium azide.
Source	Monoclonal, Mouse,IgG
Purification	The antibody was affinity-purified from mouse antiserum by affinity-chromatography using epitope-specific immunogen.
Dilution	WB 1:500-2000
Concentration	1 mg/ml
Purity	≥90%
Storage Stability	-20°C/1 year
Synonyms	CLDN1; CLD1; SEMP1; Claudin-1; Senescence-associated epithelial membrane protein
Observed Band	22kD
Cell Pathway	Cell junction, tight junction . Cell membrane ; Multi-pass membrane protein . Basolateral cell membrane . Associates with CD81 and the CLDN1-CD81 complex localizes to the basolateral cell membrane. .
Tissue Specificity	Strongly expressed in liver and kidney. Expressed in heart, brain, spleen, lung and testis.
Function	disease:Defects in CLDN1 are the cause of ichthyosis-sclerosing cholangitis neonatal syndrome (NISCH) [MIM:607626]; also called ichthyosis with leukocyte vacuoles alopecia and sclerosing cholangitis (ILVASC). NISCH is a rare autosomal recessive complex ichthyosis syndrome characterized by scalp hypotrichosis, scarring alopecia, vulgar type ichthyosis, and sclerosing cholangitis.,function:Plays a major role in tight junction-specific obliteration of the intercellular space, through calcium-independent cell-adhesion activity (By similarity). Acts as a co-receptor for HCV entry into hepatic cells.,similarity:Belongs to the claudin family.,subunit:Can form homo- and

Nanjing BYabscience technology Co.,Ltd



heteropolymers with other CLDN. Homopolymers interact with CLDN3, but not CLDN2, homopolymers. Directly interacts with TJP1/ZO-1, TJP2/ZO-2 and TJP3/ZO-3. Interacts with MPDZ and INADL (By similarity). May interact with HCV E1 an

Background

Tight junctions represent one mode of cell-to-cell adhesion in epithelial or endothelial cell sheets, forming continuous seals around cells and serving as a physical barrier to prevent solutes and water from passing freely through the paracellular space. These junctions are comprised of sets of continuous networking strands in the outwardly facing cytoplasmic leaflet, with complementary grooves in the inwardly facing extracytoplasmic leaflet. The protein encoded by this gene, a member of the claudin family, is an integral membrane protein and a component of tight junction strands. Loss of function mutations result in neonatal ichthyosis-sclerosing cholangitis syndrome. [provided by RefSeq, Jul 2008],

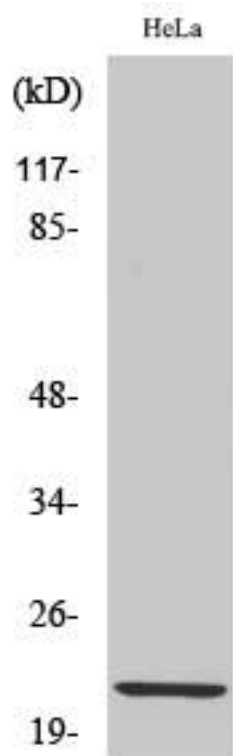
matters needing attention

Avoid repeated freezing and thawing!

Usage suggestions

This product can be used in immunological reaction related experiments. For more information, please consult technical personnel.

Products Images



Western Blot analysis of various cells using Claudin-1 Monoclonal Antibody