



CEACAM21 Monoclonal Antibody

Catalog No	BYmab-16949
Isotype	IgG
Reactivity	Human
Applications	WB
Gene Name	CEACAM21
Protein Name	Carcinoembryonic antigen-related cell adhesion molecule 21
Immunogen	The antiserum was produced against synthesized peptide derived from human CEACAM21. AA range:171-220
Specificity	CEACAM21 Monoclonal Antibody detects endogenous levels of CEACAM21 protein.
Formulation	Liquid in PBS containing 50% glycerol, 0.5% BSA and 0.02% sodium azide.
Source	Monoclonal, Mouse,IgG
Purification	The antibody was affinity-purified from mouse antiserum by affinity-chromatography using epitope-specific immunogen.
Dilution	WB 1:500-2000
Concentration	1 mg/ml
Purity	≥90%
Storage Stability	-20°C/1 year
Synonyms	CEACAM21; Carcinoembryonic antigen-related cell adhesion molecule 21
Observed Band	32kD
Cell Pathway	Membrane ; Single-pass type I membrane protein .
Tissue Specificity	Testis,
Function	similarity:Belongs to the immunoglobulin superfamily. CEA family.,similarity:Contains 1 Ig-like C2-type (immunoglobulin-like) domain.,
Background	similarity:Belongs to the immunoglobulin superfamily. CEA family.,similarity:Contains 1 Ig-like C2-type (immunoglobulin-like) domain.,
matters needing attention	Avoid repeated freezing and thawing!

Nanjing BYabscience technology Co.,Ltd

网址: www.njbybio.com

官方热线: 025-5229-8998

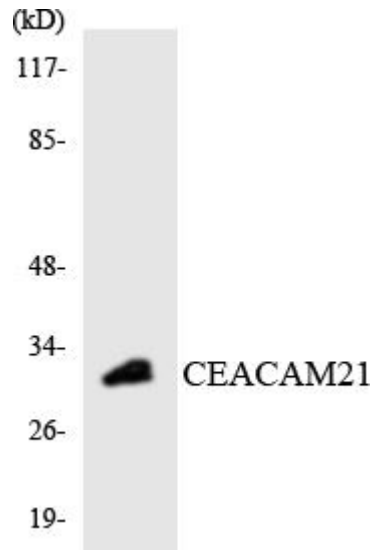
监督电话: 15950492658



Usage suggestions

This product can be used in immunological reaction related experiments. For more information, please consult technical personnel.

Products Images



Western Blot analysis of various cells using
CEACAM21 Monoclonal Antibody

Nanjing BYabs science technology Co.,Ltd

网址: www.njbybio.com

官方热线: 025-5229-8998

监督电话: 15950492658