



# Actinin- $\alpha$ 2/3 Monoclonal Antibody

Catalog No	BYmab-16924
Isotype	IgG
Reactivity	Human;Mouse;Rat
Applications	WB
Gene Name	ACTN2/ACTN3
Protein Name	Alpha-actinin-2/3
Immunogen	The antiserum was produced against synthesized peptide derived from human Actinin alpha-2/3. AA range:31-80
Specificity	Actinin- $\alpha$ 2/3 Monoclonal Antibody detects endogenous levels of Actinin- $\alpha$ 2/3 protein.
Formulation	Liquid in PBS containing 50% glycerol, 0.5% BSA and 0.02% sodium azide.
Source	Monoclonal, Mouse,IgG
Purification	The antibody was affinity-purified from mouse antiserum by affinity-chromatography using epitope-specific immunogen.
Dilution	WB 1:500-2000
Concentration	1 mg/ml
Purity	$\geq 90\%$
Storage Stability	-20°C/1 year
Synonyms	ACTN2; Alpha-actinin-2; Alpha-actinin skeletal muscle isoform 2; F-actin cross-linking protein; ACTN3; Alpha-actinin-3; Alpha-actinin skeletal muscle isoform 3; F-actin cross-linking protein
Observed Band	103kD
Cell Pathway	Cytoplasm, myofibril, sarcomere, Z line . Colocalizes with MYOZ1 and FLNC at the Z-lines of skeletal muscle.
Tissue Specificity	Expressed in both skeletal and cardiac muscle.
Function	disease:Defects in ACTN2 are the cause of cardiomyopathy dilated type 1AA (CMD1AA) [MIM:612158]. Dilated cardiomyopathy is a disorder characterized by ventricular dilation and impaired systolic function, resulting in congestive heart failure and arrhythmia. Patients are at risk of premature death.,function:F-actin cross-linking protein which is thought to anchor actin to a variety of intracellular structures. This is a bundling protein.,similarity:Belongs to the alpha-actinin family.,similarity:Contains 1 actin-binding domain.,similarity:Contains 2 CH (calponin-homology) domains.,similarity:Contains 2 EF-hand

Nanjing BYabscience technology Co.,Ltd



domains.,similarity:Contains 4 spectrin repeats.,subcellular location:Colocalizes with MYOZ1 and FLNC at the Z-lines of skeletal muscle.,subunit:Homodimer; antiparallel. Also forms heterodimers with ACTN3. Interacts with ADAM12, MYOZ1, MYOZ2 and MYOZ3. Interacts via its C-terminal r

## Background

Alpha actinins belong to the spectrin gene superfamily which represents a diverse group of cytoskeletal proteins, including the alpha and beta spectrins and dystrophins. Alpha actinin is an actin-binding protein with multiple roles in different cell types. In nonmuscle cells, the cytoskeletal isoform is found along microfilament bundles and adherens-type junctions, where it is involved in binding actin to the membrane. In contrast, skeletal, cardiac, and smooth muscle isoforms are localized to the Z-disc and analogous dense bodies, where they help anchor the myofibrillar actin filaments. This gene encodes a muscle-specific, alpha actinin isoform that is expressed in both skeletal and cardiac muscles. Several transcript variants encoding different isoforms have been found for this gene. [provided by RefSeq, May 2013],

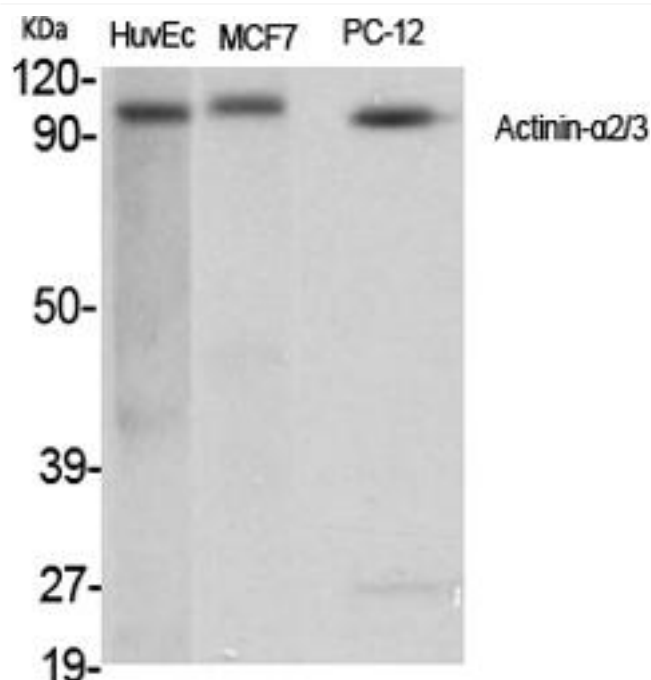
## matters needing attention

Avoid repeated freezing and thawing!

## Usage suggestions

This product can be used in immunological reaction related experiments. For more information, please consult technical personnel.

## Products Images



Western Blot analysis of various cells using Actinin-  $\alpha$  2/3 Monoclonal Antibody

Nanjing BYabs science technology Co.,Ltd

网址: [www.njbybio.com](http://www.njbybio.com)

官方热线: 025-5229-8998

监督电话: 15950492658