



Cleaved-COL1A2 (G1102) Monoclonal Antibody

Catalog No	BYmab-16800
Isotype	IgG
Reactivity	Human;Rat;Mouse;
Applications	WB
Gene Name	COL1A2
Protein Name	Collagen alpha-2(I) chain
Immunogen	The antiserum was produced against synthesized peptide derived from human Collagen I alpha2. AA range:1053-1102
Specificity	Cleaved-COL1A2 (G1102) Monoclonal Antibody detects endogenous levels of fragment of activated COL1A2 protein resulting from cleavage adjacent to G1102.
Formulation	Liquid in PBS containing 50% glycerol, 0.5% BSA and 0.02% sodium azide.
Source	Monoclonal, Mouse,IgG
Purification	The antibody was affinity-purified from mouse antiserum by affinity-chromatography using epitope-specific immunogen.
Dilution	WB 1:500-2000
Concentration	1 mg/ml
Purity	≥90%
Storage Stability	-20°C/1 year
Synonyms	COL1A2; Collagen alpha-2(I) chain; Alpha-2 type I collagen
Observed Band	92kD
Cell Pathway	Secreted, extracellular space, extracellular matrix .
Tissue Specificity	Forms the fibrils of tendon, ligaments and bones. In bones the fibrils are mineralized with calcium hydroxyapatite.
Function	disease:A chromosomal rearrangement involving COL1A2 may be a cause of lipoblastomas, which are benign tumors resulting from transformation of adipocytes, usually diagnosed in children. Translocation t(7;8)(p22;q13) with PLAG1.,disease:Defects in COL1A2 are a cause of osteogenesis imperfecta type I (OI-I) [MIM:166200]. OI-I is a dominantly inherited serious newborn disease characterized by bone fragility, normal stature, little or no deformity, blue sclerae and hearing loss in 50% of families. Dentinogenesis imperfecta is rare and may distinguish a subset of OI type I (formation of dentine).,disease:Defects in COL1A2 are a cause of osteogenesis imperfecta type II (OI-II) [MIM:166210]; also known as osteogenesis imperfecta congenita (OIC) or lethal perinatal. OI-II is a serious newborn disease that diffusely affects bone. Infants are born with multiple

Nanjing BYabscience technology Co.,Ltd



fractures, which lead to shortening

Background

This gene encodes the pro-alpha2 chain of type I collagen whose triple helix comprises two alpha1 chains and one alpha2 chain. Type I is a fibril-forming collagen found in most connective tissues and is abundant in bone, cornea, dermis and tendon. Mutations in this gene are associated with osteogenesis imperfecta types I-IV, Ehlers-Danlos syndrome type VIIB, recessive Ehlers-Danlos syndrome Classical type, idiopathic osteoporosis, and atypical Marfan syndrome. Symptoms associated with mutations in this gene, however, tend to be less severe than mutations in the gene for the alpha1 chain of type I collagen (COL1A1) reflecting the different role of alpha2 chains in matrix integrity. Three transcripts, resulting from the use of alternate polyadenylation signals, have been identified for this gene. [provided by R. Dalgleish, Feb 2008],

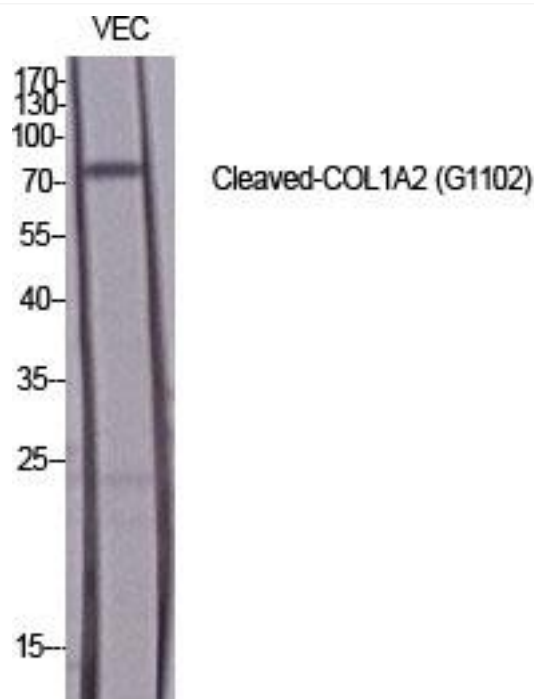
matters needing attention

Avoid repeated freezing and thawing!

Usage suggestions

This product can be used in immunological reaction related experiments. For more information, please consult technical personnel.

Products Images



Western Blot analysis of various cells using
Cleaved-COL1A2 (G1102) Monoclonal Antibody

Nanjing BYabscience technology Co.,Ltd

网址: www.njbybio.com

官方热线: 025-5229-8998

监督电话: 15950492658