



# Cdc34 Monoclonal Antibody

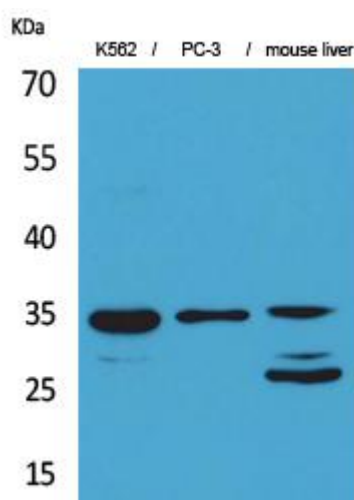
Catalog No	BYmab-16790
Isotype	IgG
Reactivity	Human;Mouse;Rat
Applications	WB
Gene Name	CDC34
Protein Name	Ubiquitin-conjugating enzyme E2 R1
Immunogen	The antiserum was produced against synthesized peptide derived from the Internal region of human CDC34. AA range:121-170
Specificity	Cdc34 Monoclonal Antibody detects endogenous levels of Cdc34 protein.
Formulation	Liquid in PBS containing 50% glycerol, 0.5% BSA and 0.02% sodium azide.
Source	Monoclonal, Mouse,IgG
Purification	The antibody was affinity-purified from mouse antiserum by affinity-chromatography using epitope-specific immunogen.
Dilution	WB 1:500-2000
Concentration	1 mg/ml
Purity	≥90%
Storage Stability	-20°C/1 year
Synonyms	CDC34; UBCH3; UBE2R1; Ubiquitin-conjugating enzyme E2 R1; Ubiquitin-conjugating enzyme E2-32 kDa complementing; Ubiquitin-conjugating enzyme E2-CDC34; Ubiquitin-protein ligase R1
Observed Band	34kD
Cell Pathway	Cytoplasm. Nucleus. The phosphorylation of the C-terminal tail plays an important role in mediating nuclear localization. Colocalizes with beta-tubulin on mitotic spindles in anaphase.
Tissue Specificity	Expressed in testes during spermatogenesis to regulate repression of cAMP-induced transcription.
Function	catalytic activity:ATP + ubiquitin + protein lysine = AMP + diphosphate + protein N-ubiquityllysine.,function:Catalyzes the covalent attachment of ubiquitin to other proteins. May be involved in degradation of katenin.,pathway:Protein modification; protein ubiquitination.,similarity:Belongs to the ubiquitin-conjugating enzyme family.,subunit:Interacts with SCF (SKP1-CUL1-F-box protein) E3 ubiquitin ligase complex. When phosphorylated, interacts with beta-TrCP (BTRC).,

Nanjing BYabscience technology Co.,Ltd



<b>Background</b>	The protein encoded by this gene is a member of the ubiquitin-conjugating enzyme family. Ubiquitin-conjugating enzyme catalyzes the covalent attachment of ubiquitin to other proteins. This protein is a part of the large multiprotein complex, which is required for ubiquitin-mediated degradation of cell cycle G1 regulators, and for the initiation of DNA replication. [provided by RefSeq, Jul 2008],
<b>matters needing attention</b>	Avoid repeated freezing and thawing!
<b>Usage suggestions</b>	This product can be used in immunological reaction related experiments. For more information, please consult technical personnel.

## Products Images



Western Blot analysis of various cells using Cdc34 Monoclonal Antibody