



NVL Monoclonal Antibody

| | |
|--------------------|---|
| Catalog No | BYmab-16784 |
| Isotype | IgG |
| Reactivity | Human;Mouse;Rat |
| Applications | WB |
| Gene Name | NVL |
| Protein Name | Nuclear valosin-containing protein-like |
| Immunogen | Synthesized peptide derived from NVL . at AA range: 320-400 |
| Specificity | NVL Monoclonal Antibody detects endogenous levels of NVL protein. |
| Formulation | Liquid in PBS containing 50% glycerol, 0.5% BSA and 0.02% sodium azide. |
| Source | Monoclonal, Mouse,IgG |
| Purification | The antibody was affinity-purified from mouse antiserum by affinity-chromatography using epitope-specific immunogen. |
| Dilution | WB 1:500-2000 |
| Concentration | 1 mg/ml |
| Purity | ≥90% |
| Storage Stability | -20°C/1 year |
| Synonyms | NVL; Nuclear valosin-containing protein-like; NVLp; Nuclear VCP-like protein |
| Observed Band | 95kD |
| Cell Pathway | [Isoform 2]: Nucleus, nucleoplasm .; [Isoform 1]: Nucleus, nucleolus . Nucleus, nucleoplasm . Expressed predominantly in the nucleolus. Associates with pre-ribosomal particles in the nucleus. . |
| Tissue Specificity | Widely expressed. Highest level of expression in heart, placenta, skeletal muscle, pancreas and retina. |
| Function | PTM:Phosphorylated.,similarity:Belongs to the AAA ATPase family.,tissue specificity:Widely expressed. Highest level of expression in heart, placenta, skeletal muscle, pancreas and retina., |
| Background | This gene encodes a member of the AAA (ATPases associated with diverse cellular activities) superfamily. Multiple transcript variants encoding different isoforms have been found for this gene. Two encoded proteins, described as major and minor isoforms, have been localized to distinct regions of the nucleus. The largest encoded protein (major isoform) has been localized to the nucleolus and shown to participate in ribosome biosynthesis (PMID: 15469983, 16782053), while the minor isoform has been localized to the nucleoplasm. [provided by |

Nanjing BYabscience technology Co.,Ltd



RefSeq, Aug 2011],

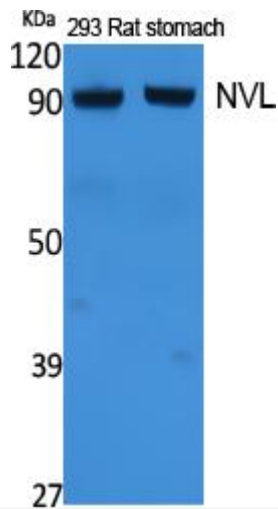
matters needing attention

Avoid repeated freezing and thawing!

Usage suggestions

This product can be used in immunological reaction related experiments. For more information, please consult technical personnel.

Products Images



Western Blot analysis of various cells using NVL Monoclonal Antibody

Nanjing BYabs science technology Co.,Ltd

网址: www.njbybio.com

官方热线: 025-5229-8998

监督电话: 15950492658