



NuMA Monoclonal Antibody

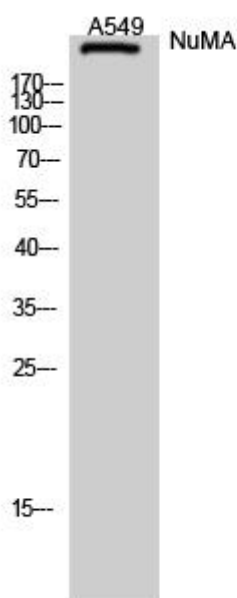
Catalog No	BYmab-16756
Isotype	IgG
Reactivity	Human;Rat;Mouse;
Applications	WB
Gene Name	NUMA1
Protein Name	Nuclear mitotic apparatus protein 1
Immunogen	The antiserum was produced against synthesized peptide derived from human NUMA1. AA range:334-383
Specificity	NuMA Monoclonal Antibody detects endogenous levels of NuMA protein.
Formulation	Liquid in PBS containing 50% glycerol, 0.5% BSA and 0.02% sodium azide.
Source	Monoclonal, Mouse,IgG
Purification	The antibody was affinity-purified from mouse antiserum by affinity-chromatography using epitope-specific immunogen.
Dilution	WB 1:500-2000
Concentration	1 mg/ml
Purity	≥90%
Storage Stability	-20°C/1 year
Synonyms	NUMA1; NUMA; Nuclear mitotic apparatus protein 1; NuMA protein; SP-H antigen
Observed Band	240kD
Cell Pathway	Nucleus . Nucleus, nucleoplasm . Nucleus matrix . Chromosome . Cytoplasm, cytoskeleton . Cytoplasm, cytoskeleton, microtubule organizing center, centrosome . Cytoplasm, cytoskeleton, spindle pole . Cytoplasm, cell cortex . Cell membrane ; Lipid-anchor ; Cytoplasmic side . Lateral cell membrane . Mitotic cell cycle-dependent shuttling protein that relocates from the interphase nucleus to the spindle poles and cell cortex (PubMed:1541636, PubMed:10811826). The localization to the spindle poles is regulated by AAAS (PubMed:26246606). In interphase, resides in the nuclear matrix (PubMed:1541630, PubMed:1541636, PubMed:23921553). In prophase, restricted to the interchromatin or condensed chromosome space (PubMed:10811826). In prometaphase, after nuclear envelope disassembly, forms aggregates
Tissue Specificity	Brain,Epithelium,Kidney,Lung,Muscle,Ovary,Testis,Uterus,
Function	function:May be a structural component of the nucleus.,subcellular location:Dissociates from condensing chromosomes during early prophase,

Nanjing BYabscience technology Co.,Ltd



	before the complete disintegration of the nuclear lamina. As mitosis progresses it reassociates with telophase chromosomes very early during nuclear reformation, before substantial accumulation of lamins on chromosomal surfaces is evident.,
Background	This gene encodes a large protein that forms a structural component of the nuclear matrix. The encoded protein interacts with microtubules and plays a role in the formation and organization of the mitotic spindle during cell division. Chromosomal translocation of this gene with the RARA (retinoic acid receptor, alpha) gene on chromosome 17 have been detected in patients with acute promyelocytic leukemia. Alternative splicing results in multiple transcript variants. [provided by RefSeq, Nov 2013],
matters needing attention	Avoid repeated freezing and thawing!
Usage suggestions	This product can be used in immunological reaction related experiments. For more information, please consult technical personnel.

Products Images



Western Blot analysis of various cells using NuMA Monoclonal Antibody